

## **SNMP Capability in AERO.10/100/1000/2000/asi/soft**

Date: 10/1/2016

### **Background**

Simple Network Management Protocol (SNMP) is a widely used IP messaging protocol for managing devices connected to a network. It can be used to for a variety purposes. These include:

- information collection from network connected devices
- Configuring, network connected devices,
- Controlling network connected devices

The information that a device can provide and the configuration and control options available using SNMP are provided by each device in a Management Information Base. The MIB for AERO processors is included below.

AERO processors with software versions after 3.15.41 now have an SNMP configuration page in NfRemote and an SNMP agent which sends SNMP messages on the network according to the user settings of parameters. A third party SNMP manager is needed to receive and process the SNMP messages according to the user's needs. An SNMP manager is not included with AERO processors and is not provided by Linear Acoustic.

Passwords can be defined for two SNMP read only and two read/write Communities.

AERO SNMP also supports SNMP Trap v1 and SNMP Trap v2c traps with two IP trap addresses available for each Trap version.

There are also user set parameters for audio condition Traps.

### **AERO SNMP Setup**

SNMP configuration includes:

- SNMP On/Off
- Notes for unit location and system admin contact
- Passwords for read only and read/write communities
- Trap v1 and Trap v2c receiver IP addresses

This setup can be found in NfRemote by navigating to:

System > Alarms > SNMP. See figure SNMP-1, below



Figure SNMP-1 SNMP setup

There is a page where current alarms are displayed. Disconnecting the SDI input to the AERO.100 in the screen shot results in alarms for video loss and sync loss being shown on the alarms page. The sync loss alarm is triggered because this unit is configured to sync to the input SDI timing. The alarm page is found by navigating to:

System > Alarms > Current alarms. See figure SNMP-2, below.



Figure SNMP-2 Alarms Page

There are SNMP Traps for:

Audio Above Target Level by x dB for y seconds.

Audio below Target level by a for b seconds

Silence = -c dB for d seconds.

These parameters are set on the Audio page. See Figure SNMP-3, below



Figure SNMP-3 Audio Alarms

Once SNMP is enabled the traps are active.

### Finding the AERO MIB

The AERO MIB is included in the HTTP server of every AERO that has SNMP functionality.

Connect to the AERO HTTP server as you would to retrieve logs or download a copy of the latest NfRemote. To connect enter the IP address of your AERO unit, followed by the port, in a web browser. Please remember that the PC you use to connect to the AERO must appear in the AERO HTTP white list to have permission to connect to the HTTP server. The entry in the browser address bar looks like this: 192.168.1.81:7380. See SNMP Figure-4, below

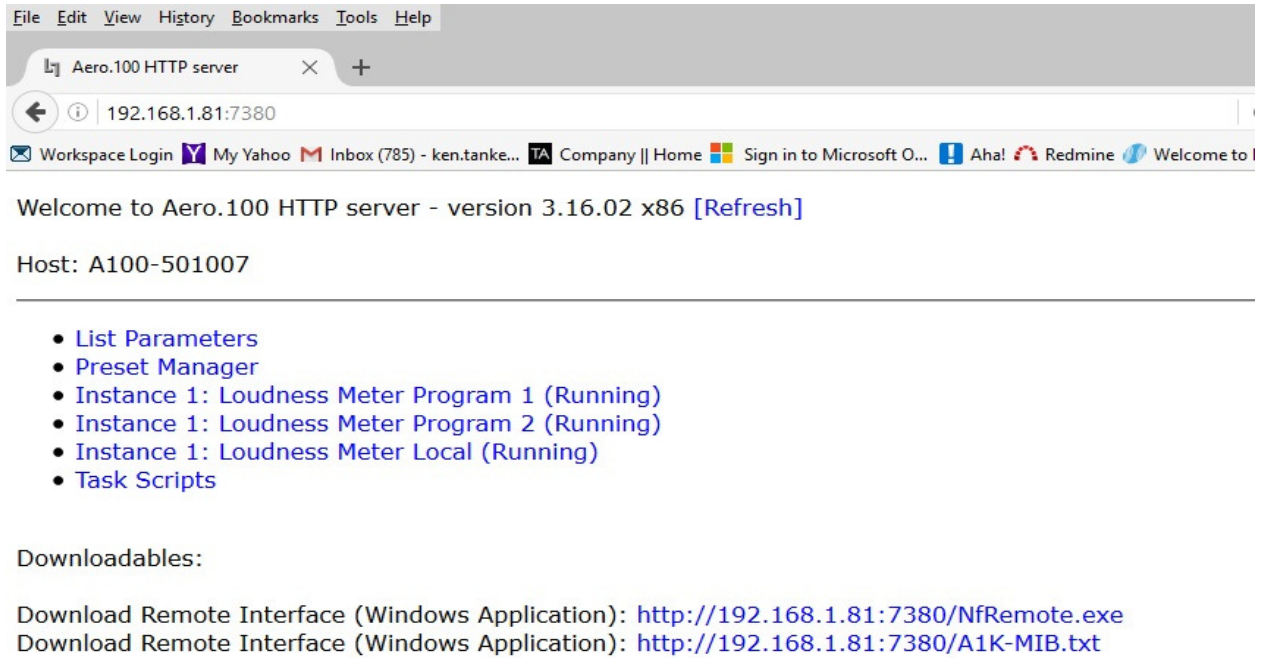


Figure SNMP-4 HTTP landing page

The MIB.txt file can be right clicked and the MIB saved to the PC or it can be double clicked and the MIB will open in the browser. See Figure SNMP-5, below.

```

File Edit View History Bookmarks Tools Help
http://192.16.../A1K-MIB.txt
192.168.1.81:7380/A1K-MIB.txt
Workspace Login My Yahoo Inbox (785) - ken.tanke... Company || Home Sign in to Microsoft O... Aha! Redmine

A1K-MIB DEFINITIONS ::= BEGIN

-- MIB for AERO.1000 family devices
-- Applicable to software version: 3.15.41 - 3.15.49
-- Author: Leif Claesson
-- Hooray for SNMP

IMPORTS
    enterprises                FROM RFC1155-SMI
    TRAP-TYPE                  FROM RFC-1215
    OBJECT-TYPE                FROM RFC-1212;

linearAcoustic OBJECT IDENTIFIER ::= { enterprises 28660 }
alk            OBJECT IDENTIFIER ::= { linearAcoustic 1000 }
link          OBJECT IDENTIFIER ::= { alk 1 }
sysinfo       OBJECT IDENTIFIER ::= { alk 2 }
status        OBJECT IDENTIFIER ::= { alk 3 }
instances     OBJECT IDENTIFIER ::= { alk 10 }
inst1         OBJECT IDENTIFIER ::= { instances 1 }
inst2         OBJECT IDENTIFIER ::= { instances 2 }
inst3         OBJECT IDENTIFIER ::= { instances 3 }
inst4         OBJECT IDENTIFIER ::= { instances 4 }
inst5         OBJECT IDENTIFIER ::= { instances 5 }
inst6         OBJECT IDENTIFIER ::= { instances 6 }
inst7         OBJECT IDENTIFIER ::= { instances 7 }
inst8         OBJECT IDENTIFIER ::= { instances 8 }

inst1-pgm1    OBJECT IDENTIFIER ::= { inst1 10 }
inst1-pgm1b  OBJECT IDENTIFIER ::= { inst1 11 }
inst1-pgm1c  OBJECT IDENTIFIER ::= { inst1 12 }
inst1-pgm2    OBJECT IDENTIFIER ::= { inst1 20 }
inst1-pgm2r  OBJECT IDENTIFIER ::= { inst1 21 }
inst1-pgm3    OBJECT IDENTIFIER ::= { inst1 30 }

```

Figure SNMP-5 AERO MIB

### What is Included in the MIB?

The AERO MIB provides SNMP information about two broad categories of AERO processor or AERO.soft Processing Engine operation. The first includes parameters of the physical hardware system and installed software and firmware versions. The second category includes information about the status of each individual audio program processor operating on the hardware system. This includes conditions of each audio program processor in each Instance for up to 8 Instances in a single device.

## System Information

1. AERO model, software, firmware, and FPGA versions
2. Status of multiple, internal, hardware and software system conditions
3. SDI, audio and sync reference status

## Information from Individual Dynamic Range Controls (DRC)

1. Program Silence
2. Program Loudness
3. Program Loudness Out of Range
4. Audio OK
5. Audio Loss
6. Loudness OK
7. Loudness Out of Range

The complete MIB is included below.

## AERO MIB

A1K-MIB DEFINITIONS ::= BEGIN

-- MIB for AERO.1000 family devices

-- Applicable to software version: 3.15.41 - 3.15.49

-- Author: Leif Claesson

-- Hooray for SNMP

IMPORTS

enterprises FROM RFC1155-SMI

TRAP-TYPE FROM RFC-1215

OBJECT-TYPE FROM RFC-1212;

linearAcoustic OBJECT IDENTIFIER ::= { enterprises 28660 }

a1k OBJECT IDENTIFIER ::= { linearAcoustic 1000 }

link OBJECT IDENTIFIER ::= { a1k 1 }

sysinfo OBJECT IDENTIFIER ::= { a1k 2 }

status OBJECT IDENTIFIER ::= { a1k 3 }

instances OBJECT IDENTIFIER ::= { a1k 10 }

inst1 OBJECT IDENTIFIER ::= { instances 1 }

inst2 OBJECT IDENTIFIER ::= { instances 2 }

inst3 OBJECT IDENTIFIER ::= { instances 3 }

inst4 OBJECT IDENTIFIER ::= { instances 4 }

inst5 OBJECT IDENTIFIER ::= { instances 5 }

inst6 OBJECT IDENTIFIER ::= { instances 6 }

inst7 OBJECT IDENTIFIER ::= { instances 7 }

inst8 OBJECT IDENTIFIER ::= { instances 8 }

inst1-pgm1 OBJECT IDENTIFIER ::= { inst1 10 }

inst1-pgm1b OBJECT IDENTIFIER ::= { inst1 11 }

inst1-pgm1c OBJECT IDENTIFIER ::= { inst1 12 }

inst1-pgm2 OBJECT IDENTIFIER ::= { inst1 20 }

inst1-pgm2r OBJECT IDENTIFIER ::= { inst1 21 }

inst1-pgm3 OBJECT IDENTIFIER ::= { inst1 30 }

inst2-pgm1 OBJECT IDENTIFIER ::= { inst2 10 }

inst2-pgm1b OBJECT IDENTIFIER ::= { inst2 11 }

inst2-pgm1c OBJECT IDENTIFIER ::= { inst2 12 }

inst2-pgm2 OBJECT IDENTIFIER ::= { inst2 20 }

inst2-pgm2r OBJECT IDENTIFIER ::= { inst2 21 }

inst2-pgm3 OBJECT IDENTIFIER ::= { inst2 30 }

inst3-pgm1 OBJECT IDENTIFIER ::= { inst3 10 }

inst3-pgm1b OBJECT IDENTIFIER ::= { inst3 11 }

inst3-pgm1c OBJECT IDENTIFIER ::= { inst3 12 }

inst3-pgm2 OBJECT IDENTIFIER ::= { inst3 20 }

inst3-pgm2r OBJECT IDENTIFIER ::= { inst3 21 }

inst3-pgm3 OBJECT IDENTIFIER ::= { inst3 30 }

inst4-pgm1 OBJECT IDENTIFIER ::= { inst4 10 }

inst4-pgm1b OBJECT IDENTIFIER ::= { inst4 11 }

inst4-pgm1c OBJECT IDENTIFIER ::= { inst4 12 }

inst4-pgm2 OBJECT IDENTIFIER ::= { inst4 20 }

inst4-pgm2r OBJECT IDENTIFIER ::= { inst4 21 }

inst4-pgm3 OBJECT IDENTIFIER ::= { inst4 30 }

inst5-pgm1 OBJECT IDENTIFIER ::= { inst5 10 }

inst5-pgm1b OBJECT IDENTIFIER ::= { inst5 11 }

inst5-pgm1c OBJECT IDENTIFIER ::= { inst5 12 }

inst5-pgm2 OBJECT IDENTIFIER ::= { inst5 20 }

inst5-pgm2r OBJECT IDENTIFIER ::= { inst5 21 }



inst5-pgm3 OBJECT IDENTIFIER ::= { inst5 30 }

inst6-pgm1 OBJECT IDENTIFIER ::= { inst6 10 }

inst6-pgm1b OBJECT IDENTIFIER ::= { inst6 11 }

inst6-pgm1c OBJECT IDENTIFIER ::= { inst6 12 }

inst6-pgm2 OBJECT IDENTIFIER ::= { inst6 20 }

inst6-pgm2r OBJECT IDENTIFIER ::= { inst6 21 }

inst6-pgm3 OBJECT IDENTIFIER ::= { inst6 30 }

inst7-pgm1 OBJECT IDENTIFIER ::= { inst7 10 }

inst7-pgm1b OBJECT IDENTIFIER ::= { inst7 11 }

inst7-pgm1c OBJECT IDENTIFIER ::= { inst7 12 }

inst7-pgm2 OBJECT IDENTIFIER ::= { inst7 20 }

inst7-pgm2r OBJECT IDENTIFIER ::= { inst7 21 }

inst7-pgm3 OBJECT IDENTIFIER ::= { inst7 30 }

inst8-pgm1 OBJECT IDENTIFIER ::= { inst8 10 }

inst8-pgm1b OBJECT IDENTIFIER ::= { inst8 11 }

inst8-pgm1c OBJECT IDENTIFIER ::= { inst8 12 }

inst8-pgm2 OBJECT IDENTIFIER ::= { inst8 20 }

inst8-pgm2r OBJECT IDENTIFIER ::= { inst8 21 }

inst8-pgm3 OBJECT IDENTIFIER ::= { inst8 30 }

-- link

snmp-internal-link-status OBJECT-TYPE

SYNTAX INTEGER {unavailable (-1), linked (0), unlinked (1)}

ACCESS read-only

STATUS optional

DESCRIPTION

"SNMP service currently linked to Aero.1000. This link goes down during upgrade and reconfiguration."

DEFVAL { -1 }

::= { link 1 }

**snmp-internal-link-sustained-failure OBJECT-TYPE**

**SYNTAX INTEGER {unavailable (-1), ok (0), fail (1)}**

**ACCESS read-only**

**STATUS optional**

**DESCRIPTION**

**"SNMP service unable to communicate with Aero.1000 for an extended time. Failure is critical issue."**

DEFVAL { -1 }

::= { link 2 }

--

-- sysinfo

--

-- model

**model-name OBJECT-TYPE**

**SYNTAX OCTET STRING (SIZE (0..64))**

**ACCESS read-only**

**STATUS mandatory**

**DESCRIPTION**

**"Model Name"**

::= { sysinfo 1 }

-- software version

**software-version OBJECT-TYPE**

**SYNTAX OCTET STRING (SIZE (0..64))**

**ACCESS read-only**

**STATUS mandatory**

**DESCRIPTION**

```

        "Device's software version."

 ::= { sysinfo 2 }

-- firmware version

fpga-version OBJECT-TYPE

    SYNTAX   OCTET STRING (SIZE (0..64))

    ACCESS   read-only

    STATUS   mandatory

    DESCRIPTION

        "Devices's fpga version."

 ::= { sysinfo 3 }

--

-- status

--

engine-status OBJECT-TYPE

    SYNTAX   INTEGER {unavailable (-1), ok (0), fail (1)}

    ACCESS   read-only

    STATUS   mandatory

    DESCRIPTION

        "Status of processing engine."

    DEFVAL { -1 }

 ::= { status 1010 }

psu-status OBJECT-TYPE

    SYNTAX   INTEGER {unavailable (-1), ok (0), fail (1)}

    ACCESS   read-only

    STATUS   optional

    DESCRIPTION

        "Status of power supply redundancy."

    DEFVAL { -1 }

```

**::= { status 1020 }**

**cpu-utilization OBJECT-TYPE**

**SYNTAX INTEGER {unavailable (-1), (0..100)}**

**ACCESS read-only**

**STATUS optional**

**DESCRIPTION**

**"Status of CPU utilization."**

**DEFVAL { -1 }**

**::= { status 1030 }**

**cpu-overload OBJECT-TYPE**

**SYNTAX INTEGER {unavailable (-1), ok (0), fail (1)}**

**ACCESS read-only**

**STATUS mandatory**

**DESCRIPTION**

**"Sustained CPU overload status."**

**DEFVAL { -1 }**

**::= { status 1040 }**

**ram-available OBJECT-TYPE**

**SYNTAX INTEGER {unavailable (-1), (0..16384)}**

**ACCESS read-only**

**STATUS optional**

**DESCRIPTION**

**"Amount of RAM available (MB)."**

**DEFVAL { -1 }**

**::= { status 1050 }**

**ram-depletion OBJECT-TYPE**

**SYNTAX** INTEGER {unavailable (-1), ok (0), fail (1)}

**ACCESS** read-only

**STATUS** mandatory

**DESCRIPTION**

"Sustained RAM status."

**DEFVAL** { -1 }

**::=** { status 1060 }

**cpu-temperature OBJECT-TYPE**

**SYNTAX** INTEGER {unavailable (-1), (0..200)}

**ACCESS** read-only

**STATUS** optional

**DESCRIPTION**

"CPU temperature (Celsius)."

**DEFVAL** { -1 }

**::=** { status 1070 }

**cpu-hot OBJECT-TYPE**

**SYNTAX** INTEGER {unavailable (-1), ok (0), fail (1)}

**ACCESS** read-only

**STATUS** optional

**DESCRIPTION**

"CPU overheat condition."

**DEFVAL** { -1 }

**::=** { status 1080 }

**chassis-temperature OBJECT-TYPE**

**SYNTAX** INTEGER {unavailable (-1), (0..200)}

**ACCESS** read-only

**STATUS** optional

**DESCRIPTION**

"Chassis temperature (Celsius)."

**DEFVAL** { -1 }

**::=** { status 1090 }

**chassis-hot** OBJECT-TYPE

**SYNTAX** INTEGER {unavailable (-1), ok (0), fail (1)}

**ACCESS** read-only

**STATUS** optional

**DESCRIPTION**

"Chassis overheat condition."

**DEFVAL** { -1 }

**::=** { status 1100 }

**cpu-fan-speed** OBJECT-TYPE

**SYNTAX** INTEGER {unavailable (-1), (0..10000)}

**ACCESS** read-only

**STATUS** optional

**DESCRIPTION**

"CPU fan speed (RPM)."

**DEFVAL** { -1 }

**::=** { status 1110 }

**cpu-fan-status** OBJECT-TYPE

**SYNTAX** INTEGER {unavailable (-1), ok (0), fail (1)}

**ACCESS** read-only

**STATUS** optional

**DESCRIPTION**

"CPU fan status."

DEFVAL { -1 }

::= { status 1120 }

-- chassis-fan-speed OBJECT-TYPE

-- SYNTAX INTEGER {unavailable (-1), (0..10000)}

-- ACCESS read-only

-- STATUS optional

-- DESCRIPTION

-- "Chassis fan speed (RPM)."

-- DEFVAL { -1 }

-- ::= { status 1130 }

-- chassis-fan-status OBJECT-TYPE

-- SYNTAX INTEGER {unavailable (-1), ok (0), fail (1)}

-- ACCESS read-only

-- STATUS optional

-- DESCRIPTION

-- "Chassis fan status."

-- DEFVAL { -1 }

-- ::= { status 1140 }

audio-input-status OBJECT-TYPE

SYNTAX INTEGER {unavailable (-1), ok (0), fail (1)}

ACCESS read-only

STATUS optional

DESCRIPTION

"Audio input status."

**DEFVAL { -1 }**

**::= { status 1150 }**

**video-input-status      OBJECT-TYPE**

**SYNTAX    INTEGER {unavailable (-1), ok (0), fail (1)}**

**ACCESS    read-only**

**STATUS    optional**

**DESCRIPTION**

**"Video input status."**

**DEFVAL { -1 }**

**::= { status 1160 }**

**audio-reference-status      OBJECT-TYPE**

**SYNTAX    INTEGER {unavailable (-1), ok (0), fail (1)}**

**ACCESS    read-only**

**STATUS    optional**

**DESCRIPTION**

**"Audio reference status."**

**DEFVAL { -1 }**

**::= { status 1170 }**

**cn2000-status      OBJECT-TYPE**

**SYNTAX    INTEGER {unavailable (-1), ok (0), fail (1)}**

**ACCESS    read-only**

**STATUS    optional**

**DESCRIPTION**

**"CN2000 status."**

**DEFVAL { -1 }**

**::= { status 1180 }**



-- \*\*\*\*\* Instance 1 \*\*\*\*\*

--

-- inst1-pgm1

--

inst1-pgm1-silence OBJECT-TYPE

SYNTAX INTEGER {unavailable (-1), ok (0), silence (1)}

ACCESS read-only

STATUS optional

DESCRIPTION

"Instance 1 Program 1 silence."

DEFVAL { -1 }

::= { inst1-pgm1 1 }

inst1-pgm1-outlm OBJECT-TYPE

SYNTAX INTEGER {{-144..0}}

ACCESS read-only

STATUS optional

DESCRIPTION

"Instance 1 Program 1 loudness dB LKFS / LUFS."

DEFVAL { -1 }

::= { inst1-pgm1 2 }

inst1-pgm1-outlm-alarm OBJECT-TYPE

SYNTAX INTEGER {unavailable (-1), ok (0), out-of-range (1)}

ACCESS read-only

STATUS optional

DESCRIPTION

"Instance 1 Program 1 loudness out of range."

DEFVAL { -1 }

```
 ::= { inst1-pgm1 3 }
--
-- inst1-pgm1 traps
--
inst1-pgm1-audio-ok TRAP-TYPE
    ENTERPRISE inst1-pgm1-silence
    DESCRIPTION
        "Aero.1000 Instance 1 Program 1 audio OK."
    ::= 0

inst1-pgm1-audio-loss TRAP-TYPE
    ENTERPRISE inst1-pgm1-silence
    DESCRIPTION
        "Aero.1000 Instance 1 Program 1 audio loss."
    ::= 1

inst1-pgm1-outlm-ok TRAP-TYPE
    ENTERPRISE inst1-pgm1-outlm-alarm
    DESCRIPTION
        "Aero.1000 Instance 1 Program 1 loudness OK."
    ::= 0

inst1-pgm1-outlm-alarm TRAP-TYPE
    ENTERPRISE inst1-pgm1-outlm-alarm
    DESCRIPTION
        "Aero.1000 Instance 1 Program 1 loudness out of range."
    ::= 1
--
-- inst1-pgm1b
```

--

**inst1-pgm1b-silence OBJECT-TYPE**

**SYNTAX** INTEGER {unavailable (-1), ok (0), silence (1)}

**ACCESS** read-only

**STATUS** optional

**DESCRIPTION**

"Instance 1 Program 1b silence."

**DEFVAL** { -1 }

**::=** { inst1-pgm1b 1 }

**inst1-pgm1b-outlm OBJECT-TYPE**

**SYNTAX** INTEGER {(-144..0)}

**ACCESS** read-only

**STATUS** optional

**DESCRIPTION**

"Instance 1 Program 1b loudness dB LKFS / LUFS."

**DEFVAL** { -1 }

**::=** { inst1-pgm1b 2 }

**inst1-pgm1b-outlm-alarm OBJECT-TYPE**

**SYNTAX** INTEGER {unavailable (-1), ok (0), out-of-range (1)}

**ACCESS** read-only

**STATUS** optional

**DESCRIPTION**

"Instance 1 Program 1b loudness out of range."

**DEFVAL** { -1 }

**::=** { inst1-pgm1b 3 }

--

**-- inst1-pgm1b traps**

--

**inst1-pgm1b-audio-ok TRAP-TYPE**

**ENTERPRISE inst1-pgm1b-silence**

**DESCRIPTION**

**"Aero.1000 Instance 1 Program 1b audio OK."**

**::= 0**

**inst1-pgm1b-audio-loss TRAP-TYPE**

**ENTERPRISE inst1-pgm1b-silence**

**DESCRIPTION**

**"Aero.1000 Instance 1 Program 1b audio loss."**

**::= 1**

**inst1-pgm1b-outlm-ok TRAP-TYPE**

**ENTERPRISE inst1-pgm1b-outlm-alarm**

**DESCRIPTION**

**"Aero.1000 Instance 1 Program 1b loudness OK."**

**::= 0**

**inst1-pgm1b-outlm-alarm TRAP-TYPE**

**ENTERPRISE inst1-pgm1b-outlm-alarm**

**DESCRIPTION**

**"Aero.1000 Instance 1 Program 1b loudness out of range."**

**::= 1**

--

-- **inst1-pgm1c**

--

**inst1-pgm1c-silence OBJECT-TYPE**

**SYNTAX INTEGER {unavailable (-1), ok (0), silence (1)}**

**ACCESS** read-only

**STATUS** optional

**DESCRIPTION**

"Instance 1 Program 1c silence."

**DEFVAL** { -1 }

::= { inst1-pgm1c 1 }

**inst1-pgm1c-outlm** OBJECT-TYPE

**SYNTAX** INTEGER {(-144..0)}

**ACCESS** read-only

**STATUS** optional

**DESCRIPTION**

"Instance 1 Program 1c loudness dB LKFS / LUFS."

**DEFVAL** { -1 }

::= { inst1-pgm1c 2 }

**inst1-pgm1c-outlm-alarm** OBJECT-TYPE

**SYNTAX** INTEGER {unavailable (-1), ok (0), out-of-range (1)}

**ACCESS** read-only

**STATUS** optional

**DESCRIPTION**

"Instance 1 Program 1c loudness out of range."

**DEFVAL** { -1 }

::= { inst1-pgm1c 3 }

--

-- inst1-pgm1c traps

--

**inst1-pgm1c-audio-ok** TRAP-TYPE

**ENTERPRISE** inst1-pgm1c-silence

**DESCRIPTION**

"Aero.1000 Instance 1 Program 1c audio OK."

::= 0

**inst1-pgm1c-audio-loss TRAP-TYPE**

**ENTERPRISE** inst1-pgm1c-silence

**DESCRIPTION**

"Aero.1000 Instance 1 Program 1c audio loss."

::= 1

**inst1-pgm1c-outlm-ok TRAP-TYPE**

**ENTERPRISE** inst1-pgm1c-outlm-alarm

**DESCRIPTION**

"Aero.1000 Instance 1 Program 1c loudness OK."

::= 0

**inst1-pgm1c-outlm-alarm TRAP-TYPE**

**ENTERPRISE** inst1-pgm1c-outlm-alarm

**DESCRIPTION**

"Aero.1000 Instance 1 Program 1c loudness out of range."

::= 1

--

-- inst1-pgm2

--

**inst1-pgm2-silence OBJECT-TYPE**

**SYNTAX** INTEGER {unavailable (-1), ok (0), silence (1)}

**ACCESS** read-only

**STATUS** optional

**DESCRIPTION**

"Instance 1 Program 2 silence."

DEFVAL { -1 }

::= { inst1-pgm2 1 }

**inst1-pgm2-outlm OBJECT-TYPE**

**SYNTAX** INTEGER {(-144..0)}

**ACCESS** read-only

**STATUS** optional

**DESCRIPTION**

"Instance 1 Program 2 loudness dB LKFS / LUFS."

DEFVAL { -1 }

::= { inst1-pgm2 2 }

**inst1-pgm2-outlm-alarm OBJECT-TYPE**

**SYNTAX** INTEGER {unavailable (-1), ok (0), out-of-range (1)}

**ACCESS** read-only

**STATUS** optional

**DESCRIPTION**

"Instance 1 Program 2 loudness out of range."

DEFVAL { -1 }

::= { inst1-pgm2 3 }

--

-- inst1-pgm2 traps

--

**inst1-pgm2-audio-ok TRAP-TYPE**

**ENTERPRISE** inst1-pgm2-silence

**DESCRIPTION**

**"Aero.1000 Instance 1 Program 2 audio OK."**

**::= 0**

**inst1-pgm2-audio-loss TRAP-TYPE**

**ENTERPRISE inst1-pgm2-silence**

**DESCRIPTION**

**"Aero.1000 Instance 1 Program 2 audio loss."**

**::= 1**

**inst1-pgm2-outlm-ok TRAP-TYPE**

**ENTERPRISE inst1-pgm2-outlm-alarm**

**DESCRIPTION**

**"Aero.1000 Instance 1 Program 2 loudness OK."**

**::= 0**

**inst1-pgm2-outlm-alarm TRAP-TYPE**

**ENTERPRISE inst1-pgm2-outlm-alarm**

**DESCRIPTION**

**"Aero.1000 Instance 1 Program 2 loudness out of range."**

**::= 1**

**--**

**-- inst1-pgm2r**

**--**

**inst1-pgm2r-silence OBJECT-TYPE**

**SYNTAX INTEGER {unavailable (-1), ok (0), silence (1)}**

**ACCESS read-only**



**STATUS optional**

**DESCRIPTION**

"Instance 1 Program 2r silence."

**DEFVAL { -1 }**

**::= { inst1-pgm2r 1 }**

**inst1-pgm2r-outlm OBJECT-TYPE**

**SYNTAX INTEGER {(-144..0)}**

**ACCESS read-only**

**STATUS optional**

**DESCRIPTION**

"Instance 1 Program 2r loudness dB LKFS / LUFS."

**DEFVAL { -1 }**

**::= { inst1-pgm2r 2 }**

**inst1-pgm2r-outlm-alarm OBJECT-TYPE**

**SYNTAX INTEGER {unavailable (-1), ok (0), out-of-range (1)}**

**ACCESS read-only**

**STATUS optional**

**DESCRIPTION**

"Instance 1 Program 2r loudness out of range."

**DEFVAL { -1 }**

**::= { inst1-pgm2r 3 }**

--

-- inst1-pgm2r traps

--

**inst1-pgm2r-audio-ok TRAP-TYPE**

**ENTERPRISE inst1-pgm2r-silence**

**DESCRIPTION**

"Aero.1000 Instance 1 Program 2r audio OK."

::= 0

**inst1-pgm2r-audio-loss TRAP-TYPE**

**ENTERPRISE inst1-pgm2r-silence**

**DESCRIPTION**

"Aero.1000 Instance 1 Program 2r audio loss."

::= 1

**inst1-pgm2r-outlm-ok TRAP-TYPE**

**ENTERPRISE inst1-pgm2r-outlm-alarm**

**DESCRIPTION**

"Aero.1000 Instance 1 Program 2r loudness OK."

::= 0

**inst1-pgm2r-outlm-alarm TRAP-TYPE**

**ENTERPRISE inst1-pgm2r-outlm-alarm**

**DESCRIPTION**

"Aero.1000 Instance 1 Program 2r loudness out of range."

::= 1

--

-- inst1-pgm3

--

**inst1-pgm3-silence OBJECT-TYPE**

**SYNTAX INTEGER {unavailable (-1), ok (0), silence (1)}**

**ACCESS read-only**

**STATUS optional**

**DESCRIPTION**

"Instance 1 Program 3 silence."

DEFVAL { -1 }

::= { inst1-pgm3 1 }

inst1-pgm3-outlm OBJECT-TYPE

SYNTAX INTEGER {(-144..0)}

ACCESS read-only

STATUS optional

DESCRIPTION

"Instance 1 Program 3 loudness dB LKFS / LUFS."

DEFVAL { -1 }

::= { inst1-pgm3 2 }

inst1-pgm3-outlm-alarm OBJECT-TYPE

SYNTAX INTEGER {unavailable (-1), ok (0), out-of-range (1)}

ACCESS read-only

STATUS optional

DESCRIPTION

"Instance 1 Program 3 loudness out of range."

DEFVAL { -1 }

::= { inst1-pgm3 3 }

--

-- inst1-pgm3 traps

--

inst1-pgm3-audio-ok TRAP-TYPE

ENTERPRISE inst1-pgm3-silence

DESCRIPTION

"Aero.1000 Instance 1 Program 3 audio OK."

::= 0

**inst1-pgm3-audio-loss TRAP-TYPE**

**ENTERPRISE inst1-pgm3-silence**

**DESCRIPTION**

**"Aero.1000 Instance 1 Program 3 audio loss."**

**::= 1**

**inst1-pgm3-outlm-ok TRAP-TYPE**

**ENTERPRISE inst1-pgm3-outlm-alarm**

**DESCRIPTION**

**"Aero.1000 Instance 1 Program 3 loudness OK."**

**::= 0**

**inst1-pgm3-outlm-alarm TRAP-TYPE**

**ENTERPRISE inst1-pgm3-outlm-alarm**

**DESCRIPTION**

**"Aero.1000 Instance 1 Program 3 loudness out of range."**

**::= 1**

**-- \*\*\*\*\* Instance 2 \*\*\*\*\***

**--**

**-- inst2-pgm1**

**--**

**inst2-pgm1-silence OBJECT-TYPE**

**SYNTAX INTEGER {unavailable (-1), ok (0), silence (1)}**

**ACCESS read-only**

**STATUS optional**

**DESCRIPTION**

**"Instance 2 Program 1 silence."**

**DEFVAL { -1 }**

::= { inst2-pgm1 1 }

**inst2-pgm1-outlm OBJECT-TYPE**

**SYNTAX** INTEGER {(-144..0)}

**ACCESS** read-only

**STATUS** optional

**DESCRIPTION**

"Instance 2 Program 1 loudness dB LKFS / LUFS."

**DEFVAL** { -1 }

::= { inst2-pgm1 2 }

**inst2-pgm1-outlm-alarm OBJECT-TYPE**

**SYNTAX** INTEGER {unavailable (-1), ok (0), out-of-range (1)}

**ACCESS** read-only

**STATUS** optional

**DESCRIPTION**

"Instance 2 Program 1 loudness out of range."

**DEFVAL** { -1 }

::= { inst2-pgm1 3 }

--

-- inst2-pgm1 traps

--

**inst2-pgm1-audio-ok TRAP-TYPE**

**ENTERPRISE** inst2-pgm1-silence

**DESCRIPTION**

"Aero.1000 Instance 2 Program 1 audio OK."

::= 0

**inst2-pgm1-audio-loss TRAP-TYPE**

**ENTERPRISE inst2-pgm1-silence**

**DESCRIPTION**

"Aero.1000 Instance 2 Program 1 audio loss."

::= 1

**inst2-pgm1-outlm-ok TRAP-TYPE**

**ENTERPRISE inst2-pgm1-outlm-alarm**

**DESCRIPTION**

"Aero.1000 Instance 2 Program 1 loudness OK."

::= 0

**inst2-pgm1-outlm-alarm TRAP-TYPE**

**ENTERPRISE inst2-pgm1-outlm-alarm**

**DESCRIPTION**

"Aero.1000 Instance 2 Program 1 loudness out of range."

::= 1

--

-- inst2-pgm1b

--

**inst2-pgm1b-silence OBJECT-TYPE**

**SYNTAX** INTEGER {unavailable (-1), ok (0), silence (1)}

**ACCESS** read-only

**STATUS** optional

**DESCRIPTION**

"Instance 2 Program 1b silence."

**DEFVAL** { -1 }

::= { inst2-pgm1b 1 }

**inst2-pgm1b-outlm OBJECT-TYPE**

**SYNTAX** INTEGER {{-144..0}}

**ACCESS** read-only

**STATUS** optional

**DESCRIPTION**

"Instance 2 Program 1b loudness dB LKFS / LUFS."

**DEFVAL** { -1 }

::= { inst2-pgm1b 2 }

**inst2-pgm1b-outlm-alarm** OBJECT-TYPE

**SYNTAX** INTEGER {unavailable (-1), ok (0), out-of-range (1)}

**ACCESS** read-only

**STATUS** optional

**DESCRIPTION**

"Instance 2 Program 1b loudness out of range."

**DEFVAL** { -1 }

::= { inst2-pgm1b 3 }

--

-- inst2-pgm1b traps

--

**inst2-pgm1b-audio-ok** TRAP-TYPE

**ENTERPRISE** inst2-pgm1b-silence

**DESCRIPTION**

"Aero.1000 Instance 2 Program 1b audio OK."

::= 0

**inst2-pgm1b-audio-loss** TRAP-TYPE

**ENTERPRISE** inst2-pgm1b-silence

**DESCRIPTION**

"Aero.1000 Instance 2 Program 1b audio loss."

::= 1

**inst2-pgm1b-outlm-ok TRAP-TYPE**

**ENTERPRISE inst2-pgm1b-outlm-alarm**

**DESCRIPTION**

"Aero.1000 Instance 2 Program 1b loudness OK."

::= 0

**inst2-pgm1b-outlm-alarm TRAP-TYPE**

**ENTERPRISE inst2-pgm1b-outlm-alarm**

**DESCRIPTION**

"Aero.1000 Instance 2 Program 1b loudness out of range."

::= 1

--

-- inst2-pgm1c

--

**inst2-pgm1c-silence OBJECT-TYPE**

**SYNTAX INTEGER {unavailable (-1), ok (0), silence (1)}**

**ACCESS read-only**

**STATUS optional**

**DESCRIPTION**

"Instance 2 Program 1c silence."

**DEFVAL { -1 }**

::= { inst2-pgm1c 1 }

**inst2-pgm1c-outlm OBJECT-TYPE**

**SYNTAX INTEGER {{-144..0}}**

**ACCESS read-only**

**STATUS optional**



**DESCRIPTION**

"Instance 2 Program 1c loudness dB LKFS / LUFS."

DEFVAL { -1 }

::= { inst2-pgm1c 2 }

**inst2-pgm1c-outlm-alarm OBJECT-TYPE**

**SYNTAX** INTEGER {unavailable (-1), ok (0), out-of-range (1)}

**ACCESS** read-only

**STATUS** optional

**DESCRIPTION**

"Instance 2 Program 1c loudness out of range."

DEFVAL { -1 }

::= { inst2-pgm1c 3 }

--

-- inst2-pgm1c traps

--

**inst2-pgm1c-audio-ok TRAP-TYPE**

**ENTERPRISE** inst2-pgm1c-silence

**DESCRIPTION**

"Aero.1000 Instance 2 Program 1c audio OK."

::= 0

**inst2-pgm1c-audio-loss TRAP-TYPE**

**ENTERPRISE** inst2-pgm1c-silence

**DESCRIPTION**

"Aero.1000 Instance 2 Program 1c audio loss."

::= 1

**inst2-pgm1c-outlm-ok TRAP-TYPE**

**ENTERPRISE inst2-pgm1c-outlm-alarm**

**DESCRIPTION**

"Aero.1000 Instance 2 Program 1c loudness OK."

::= 0

**inst2-pgm1c-outlm-alarm TRAP-TYPE**

**ENTERPRISE inst2-pgm1c-outlm-alarm**

**DESCRIPTION**

"Aero.1000 Instance 2 Program 1c loudness out of range."

::= 1

--

-- inst2-pgm2

--

**inst2-pgm2-silence OBJECT-TYPE**

**SYNTAX** INTEGER {unavailable (-1), ok (0), silence (1)}

**ACCESS** read-only

**STATUS** optional

**DESCRIPTION**

"Instance 2 Program 2 silence."

**DEFVAL** { -1 }

::= { inst2-pgm2 1 }

**inst2-pgm2-outlm OBJECT-TYPE**

**SYNTAX** INTEGER {{-144..0}}

**ACCESS** read-only

**STATUS** optional

**DESCRIPTION**

"Instance 2 Program 2 loudness dB LKFS / LUFS."

**DEFVAL** { -1 }

::= { inst2-pgm2 2 }

**inst2-pgm2-outlm-alarm OBJECT-TYPE**

**SYNTAX INTEGER {unavailable (-1), ok (0), out-of-range (1)}**

**ACCESS read-only**

**STATUS optional**

**DESCRIPTION**

**"Instance 2 Program 2 loudness out of range."**

**DEFVAL { -1 }**

::= { inst2-pgm2 3 }

--

-- inst2-pgm2 traps

--

**inst2-pgm2-audio-ok TRAP-TYPE**

**ENTERPRISE inst2-pgm2-silence**

**DESCRIPTION**

**"Aero.1000 Instance 2 Program 2 audio OK."**

**::= 0**

**inst2-pgm2-audio-loss TRAP-TYPE**

**ENTERPRISE inst2-pgm2-silence**

**DESCRIPTION**

**"Aero.1000 Instance 2 Program 2 audio loss."**

**::= 1**

**inst2-pgm2-outlm-ok TRAP-TYPE**

**ENTERPRISE inst2-pgm2-outlm-alarm**

**DESCRIPTION**

**"Aero.1000 Instance 2 Program 2 loudness OK."**

**::= 0**

**inst2-pgm2-outlm-alarm TRAP-TYPE**

**ENTERPRISE inst2-pgm2-outlm-alarm**

**DESCRIPTION**

**"Aero.1000 Instance 2 Program 2 loudness out of range."**

**::= 1**

**--**

**-- inst2-pgm2r**

**--**

**inst2-pgm2r-silence OBJECT-TYPE**

**SYNTAX INTEGER {unavailable (-1), ok (0), silence (1)}**

**ACCESS read-only**

**STATUS optional**

**DESCRIPTION**

**"Instance 2 Program 2r silence."**

**DEFVAL { -1 }**

**::= { inst2-pgm2r 1 }**

**inst2-pgm2r-outlm OBJECT-TYPE**

**SYNTAX INTEGER {{-144..0}}**

**ACCESS read-only**

**STATUS optional**

**DESCRIPTION**

**"Instance 2 Program 2r loudness dB LKFS / LUFS."**

**DEFVAL { -1 }**

**::= { inst2-pgm2r 2 }**

**inst2-pgm2r-outlm-alarm OBJECT-TYPE**

```

SYNTAX    INTEGER {unavailable (-1), ok (0), out-of-range (1)}

ACCESS    read-only

STATUS    optional

DESCRIPTION

    "Instance 2 Program 2r loudness out of range."

DEFVAL { -1 }

::= { inst2-pgm2r 3 }

--

-- inst2-pgm2r traps

--

inst2-pgm2r-audio-ok TRAP-TYPE

    ENTERPRISE inst2-pgm2r-silence

    DESCRIPTION

        "Aero.1000 Instance 2 Program 2r audio OK."

    ::= 0

inst2-pgm2r-audio-loss TRAP-TYPE

    ENTERPRISE inst2-pgm2r-silence

    DESCRIPTION

        "Aero.1000 Instance 2 Program 2r audio loss."

    ::= 1

inst2-pgm2r-outlm-ok TRAP-TYPE

    ENTERPRISE inst2-pgm2r-outlm-alarm

    DESCRIPTION

        "Aero.1000 Instance 2 Program 2r loudness OK."

    ::= 0

inst2-pgm2r-outlm-alarm TRAP-TYPE

```

**ENTERPRISE inst2-pgm2r-outlm-alarm**

**DESCRIPTION**

"Aero.1000 Instance 2 Program 2r loudness out of range."

::= 1

--

-- inst2-pgm3

--

**inst2-pgm3-silence OBJECT-TYPE**

**SYNTAX** INTEGER {unavailable (-1), ok (0), silence (1)}

**ACCESS** read-only

**STATUS** optional

**DESCRIPTION**

"Instance 2 Program 3 silence."

**DEFVAL** { -1 }

::= { inst2-pgm3 1 }

**inst2-pgm3-outlm OBJECT-TYPE**

**SYNTAX** INTEGER {{-144..0}}

**ACCESS** read-only

**STATUS** optional

**DESCRIPTION**

"Instance 2 Program 3 loudness dB LKFS / LUFS."

**DEFVAL** { -1 }

::= { inst2-pgm3 2 }

**inst2-pgm3-outlm-alarm OBJECT-TYPE**

**SYNTAX** INTEGER {unavailable (-1), ok (0), out-of-range (1)}

**ACCESS** read-only

**STATUS** optional

**DESCRIPTION**

"Instance 2 Program 3 loudness out of range."

DEFVAL { -1 }

::= { inst2-pgm3 3 }

--

-- inst2-pgm3 traps

--

**inst2-pgm3-audio-ok TRAP-TYPE**

ENTERPRISE inst2-pgm3-silence

**DESCRIPTION**

"Aero.1000 Instance 2 Program 3 audio OK."

::= 0

**inst2-pgm3-audio-loss TRAP-TYPE**

ENTERPRISE inst2-pgm3-silence

**DESCRIPTION**

"Aero.1000 Instance 2 Program 3 audio loss."

::= 1

**inst2-pgm3-outlm-ok TRAP-TYPE**

ENTERPRISE inst2-pgm3-outlm-alarm

**DESCRIPTION**

"Aero.1000 Instance 2 Program 3 loudness OK."

::= 0

**inst2-pgm3-outlm-alarm TRAP-TYPE**

ENTERPRISE inst2-pgm3-outlm-alarm

**DESCRIPTION**

"Aero.1000 Instance 2 Program 3 loudness out of range."

```
 ::= 1
-- ***** Instance 3 *****
--
-- inst3-pgm1
--
inst3-pgm1-silence OBJECT-TYPE
    SYNTAX  INTEGER {unavailable (-1), ok (0), silence (1)}
    ACCESS  read-only
    STATUS  optional
    DESCRIPTION
        "Instance 3 Program 1 silence."
    DEFVAL { -1 }
    ::= { inst3-pgm1 1 }
```

```
inst3-pgm1-outlm OBJECT-TYPE
    SYNTAX  INTEGER {(-144..0)}
    ACCESS  read-only
    STATUS  optional
    DESCRIPTION
        "Instance 3 Program 1 loudness dB LKFS / LUFS."
    DEFVAL { -1 }
    ::= { inst3-pgm1 2 }
```

```
inst3-pgm1-outlm-alarm OBJECT-TYPE
    SYNTAX  INTEGER {unavailable (-1), ok (0), out-of-range (1)}
    ACCESS  read-only
    STATUS  optional
    DESCRIPTION
        "Instance 3 Program 1 loudness out of range."
```



```

DEFVAL { -1 }

::= { inst3-pgm1 3 }

--

-- inst3-pgm1 traps

--

inst3-pgm1-audio-ok TRAP-TYPE

    ENTERPRISE inst3-pgm1-silence

    DESCRIPTION

        "Aero.1000 Instance 3 Program 1 audio OK."

    ::= 0

inst3-pgm1-audio-loss TRAP-TYPE

    ENTERPRISE inst3-pgm1-silence

    DESCRIPTION

        "Aero.1000 Instance 3 Program 1 audio loss."

    ::= 1

inst3-pgm1-outlm-ok TRAP-TYPE

    ENTERPRISE inst3-pgm1-outlm-alarm

    DESCRIPTION

        "Aero.1000 Instance 3 Program 1 loudness OK."

    ::= 0

inst3-pgm1-outlm-alarm TRAP-TYPE

    ENTERPRISE inst3-pgm1-outlm-alarm

    DESCRIPTION

        "Aero.1000 Instance 3 Program 1 loudness out of range."

    ::= 1

--

```

-- inst3-pgm1b

--

**inst3-pgm1b-silence OBJECT-TYPE**

**SYNTAX** INTEGER {unavailable (-1), ok (0), silence (1)}

**ACCESS** read-only

**STATUS** optional

**DESCRIPTION**

"Instance 3 Program 1b silence."

**DEFVAL** { -1 }

**::=** { inst3-pgm1b 1 }

**inst3-pgm1b-outlm OBJECT-TYPE**

**SYNTAX** INTEGER {(-144..0)}

**ACCESS** read-only

**STATUS** optional

**DESCRIPTION**

"Instance 3 Program 1b loudness dB LKFS / LUFS."

**DEFVAL** { -1 }

**::=** { inst3-pgm1b 2 }

**inst3-pgm1b-outlm-alarm OBJECT-TYPE**

**SYNTAX** INTEGER {unavailable (-1), ok (0), out-of-range (1)}

**ACCESS** read-only

**STATUS** optional

**DESCRIPTION**

"Instance 3 Program 1b loudness out of range."

**DEFVAL** { -1 }

**::=** { inst3-pgm1b 3 }

--

-- inst3-pgm1b traps

--

inst3-pgm1b-audio-ok TRAP-TYPE

ENTERPRISE inst3-pgm1b-silence

DESCRIPTION

"Aero.1000 Instance 3 Program 1b audio OK."

::= 0

inst3-pgm1b-audio-loss TRAP-TYPE

ENTERPRISE inst3-pgm1b-silence

DESCRIPTION

"Aero.1000 Instance 3 Program 1b audio loss."

::= 1

inst3-pgm1b-outlm-ok TRAP-TYPE

ENTERPRISE inst3-pgm1b-outlm-alarm

DESCRIPTION

"Aero.1000 Instance 3 Program 1b loudness OK."

::= 0

inst3-pgm1b-outlm-alarm TRAP-TYPE

ENTERPRISE inst3-pgm1b-outlm-alarm

DESCRIPTION

"Aero.1000 Instance 3 Program 1b loudness out of range."

::= 1

--

-- inst3-pgm1c

--

inst3-pgm1c-silence OBJECT-TYPE

**SYNTAX** INTEGER {unavailable (-1), ok (0), silence (1)}

**ACCESS** read-only

**STATUS** optional

**DESCRIPTION**

"Instance 3 Program 1c silence."

**DEFVAL** { -1 }

::= { inst3-pgm1c 1 }

**inst3-pgm1c-outlm** OBJECT-TYPE

**SYNTAX** INTEGER {(-144..0)}

**ACCESS** read-only

**STATUS** optional

**DESCRIPTION**

"Instance 3 Program 1c loudness dB LKFS / LUFS."

**DEFVAL** { -1 }

::= { inst3-pgm1c 2 }

**inst3-pgm1c-outlm-alarm** OBJECT-TYPE

**SYNTAX** INTEGER {unavailable (-1), ok (0), out-of-range (1)}

**ACCESS** read-only

**STATUS** optional

**DESCRIPTION**

"Instance 3 Program 1c loudness out of range."

**DEFVAL** { -1 }

::= { inst3-pgm1c 3 }

--

-- inst3-pgm1c traps

--

**inst3-pgm1c-audio-ok** TRAP-TYPE

**ENTERPRISE inst3-pgm1c-silence**

**DESCRIPTION**

"Aero.1000 Instance 3 Program 1c audio OK."

::= 0

**inst3-pgm1c-audio-loss TRAP-TYPE**

**ENTERPRISE inst3-pgm1c-silence**

**DESCRIPTION**

"Aero.1000 Instance 3 Program 1c audio loss."

::= 1

**inst3-pgm1c-outlm-ok TRAP-TYPE**

**ENTERPRISE inst3-pgm1c-outlm-alarm**

**DESCRIPTION**

"Aero.1000 Instance 3 Program 1c loudness OK."

::= 0

**inst3-pgm1c-outlm-alarm TRAP-TYPE**

**ENTERPRISE inst3-pgm1c-outlm-alarm**

**DESCRIPTION**

"Aero.1000 Instance 3 Program 1c loudness out of range."

::= 1

--

-- inst3-pgm2

--

**inst3-pgm2-silence OBJECT-TYPE**

**SYNTAX** INTEGER {unavailable (-1), ok (0), silence (1)}

**ACCESS** read-only

**STATUS** optional

**DESCRIPTION**

"Instance 3 Program 2 silence."

**DEFVAL** { -1 }

**::=** { inst3-pgm2 1 }

**inst3-pgm2-outlm OBJECT-TYPE**

**SYNTAX** INTEGER {(-144..0)}

**ACCESS** read-only

**STATUS** optional

**DESCRIPTION**

"Instance 3 Program 2 loudness dB LKFS / LUFS."

**DEFVAL** { -1 }

**::=** { inst3-pgm2 2 }

**inst3-pgm2-outlm-alarm OBJECT-TYPE**

**SYNTAX** INTEGER {unavailable (-1), ok (0), out-of-range (1)}

**ACCESS** read-only

**STATUS** optional

**DESCRIPTION**

"Instance 3 Program 2 loudness out of range."

**DEFVAL** { -1 }

**::=** { inst3-pgm2 3 }

--

-- inst3-pgm2 traps

--

**inst3-pgm2-audio-ok TRAP-TYPE**

**ENTERPRISE** inst3-pgm2-silence

**DESCRIPTION**

"Aero.1000 Instance 3 Program 2 audio OK."

::= 0

**inst3-pgm2-audio-loss TRAP-TYPE**

**ENTERPRISE inst3-pgm2-silence**

**DESCRIPTION**

"Aero.1000 Instance 3 Program 2 audio loss."

::= 1

**inst3-pgm2-outlm-ok TRAP-TYPE**

**ENTERPRISE inst3-pgm2-outlm-alarm**

**DESCRIPTION**

"Aero.1000 Instance 3 Program 2 loudness OK."

::= 0

**inst3-pgm2-outlm-alarm TRAP-TYPE**

**ENTERPRISE inst3-pgm2-outlm-alarm**

**DESCRIPTION**

"Aero.1000 Instance 3 Program 2 loudness out of range."

::= 1

--

-- inst3-pgm2r

--

**inst3-pgm2r-silence OBJECT-TYPE**

**SYNTAX INTEGER {unavailable (-1), ok (0), silence (1)}**

**ACCESS read-only**

**STATUS optional**

**DESCRIPTION**

"Instance 3 Program 2r silence."

DEFVAL { -1 }

::= { inst3-pgm2r 1 }

inst3-pgm2r-outlm OBJECT-TYPE

SYNTAX INTEGER {(-144..0)}

ACCESS read-only

STATUS optional

DESCRIPTION

"Instance 3 Program 2r loudness dB LKFS / LUFS."

DEFVAL { -1 }

::= { inst3-pgm2r 2 }

inst3-pgm2r-outlm-alarm OBJECT-TYPE

SYNTAX INTEGER {unavailable (-1), ok (0), out-of-range (1)}

ACCESS read-only

STATUS optional

DESCRIPTION

"Instance 3 Program 2r loudness out of range."

DEFVAL { -1 }

::= { inst3-pgm2r 3 }

--

-- inst3-pgm2r traps

--

inst3-pgm2r-audio-ok TRAP-TYPE

ENTERPRISE inst3-pgm2r-silence

DESCRIPTION

"Aero.1000 Instance 3 Program 2r audio OK."

::= 0



**inst3-pgm2r-audio-loss TRAP-TYPE**

**ENTERPRISE inst3-pgm2r-silence**

**DESCRIPTION**

**"Aero.1000 Instance 3 Program 2r audio loss."**

**::= 1**

**inst3-pgm2r-outlm-ok TRAP-TYPE**

**ENTERPRISE inst3-pgm2r-outlm-alarm**

**DESCRIPTION**

**"Aero.1000 Instance 3 Program 2r loudness OK."**

**::= 0**

**inst3-pgm2r-outlm-alarm TRAP-TYPE**

**ENTERPRISE inst3-pgm2r-outlm-alarm**

**DESCRIPTION**

**"Aero.1000 Instance 3 Program 2r loudness out of range."**

**::= 1**

--

-- inst3-pgm3

--

**inst3-pgm3-silence OBJECT-TYPE**

**SYNTAX INTEGER {unavailable (-1), ok (0), silence (1)}**

**ACCESS read-only**

**STATUS optional**

**DESCRIPTION**

**"Instance 3 Program 3 silence."**

**DEFVAL { -1 }**

**::= { inst3-pgm3 1 }**

**inst3-pgm3-outlm OBJECT-TYPE**

**SYNTAX** INTEGER {(-144..0)}

**ACCESS** read-only

**STATUS** optional

**DESCRIPTION**

"Instance 3 Program 3 loudness dB LKFS / LUFS."

**DEFVAL** { -1 }

**::=** { inst3-pgm3 2 }

**inst3-pgm3-outlm-alarm OBJECT-TYPE**

**SYNTAX** INTEGER {unavailable (-1), ok (0), out-of-range (1)}

**ACCESS** read-only

**STATUS** optional

**DESCRIPTION**

"Instance 3 Program 3 loudness out of range."

**DEFVAL** { -1 }

**::=** { inst3-pgm3 3 }

--

-- inst3-pgm3 traps

--

**inst3-pgm3-audio-ok TRAP-TYPE**

**ENTERPRISE** inst3-pgm3-silence

**DESCRIPTION**

"Aero.1000 Instance 3 Program 3 audio OK."

**::=** 0

**inst3-pgm3-audio-loss TRAP-TYPE**

**ENTERPRISE** inst3-pgm3-silence

**DESCRIPTION**

"Aero.1000 Instance 3 Program 3 audio loss."

::= 1

**inst3-pgm3-outlm-ok TRAP-TYPE**

**ENTERPRISE** inst3-pgm3-outlm-alarm

**DESCRIPTION**

"Aero.1000 Instance 3 Program 3 loudness OK."

::= 0

**inst3-pgm3-outlm-alarm TRAP-TYPE**

**ENTERPRISE** inst3-pgm3-outlm-alarm

**DESCRIPTION**

"Aero.1000 Instance 3 Program 3 loudness out of range."

::= 1

-- \*\*\*\*\* Instance 4 \*\*\*\*\*

--

-- inst4-pgm1

--

**inst4-pgm1-silence OBJECT-TYPE**

**SYNTAX** INTEGER {unavailable (-1), ok (0), silence (1)}

**ACCESS** read-only

**STATUS** optional

**DESCRIPTION**

"Instance 4 Program 1 silence."

**DEFVAL** { -1 }

::= { inst4-pgm1 1 }

**inst4-pgm1-outlm OBJECT-TYPE**

**SYNTAX** INTEGER {{-144..0}}

**ACCESS** read-only

**STATUS** optional

**DESCRIPTION**

"Instance 4 Program 1 loudness dB LKFS / LUFS."

**DEFVAL** { -1 }

::= { inst4-pgm1 2 }

**inst4-pgm1-outlm-alarm** OBJECT-TYPE

**SYNTAX** INTEGER {unavailable (-1), ok (0), out-of-range (1)}

**ACCESS** read-only

**STATUS** optional

**DESCRIPTION**

"Instance 4 Program 1 loudness out of range."

**DEFVAL** { -1 }

::= { inst4-pgm1 3 }

--

-- inst4-pgm1 traps

--

**inst4-pgm1-audio-ok** TRAP-TYPE

**ENTERPRISE** inst4-pgm1-silence

**DESCRIPTION**

"Aero.1000 Instance 4 Program 1 audio OK."

::= 0

**inst4-pgm1-audio-loss** TRAP-TYPE

**ENTERPRISE** inst4-pgm1-silence

**DESCRIPTION**

"Aero.1000 Instance 4 Program 1 audio loss."

**::= 1**

**inst4-pgm1-outlm-ok TRAP-TYPE**

**ENTERPRISE inst4-pgm1-outlm-alarm**

**DESCRIPTION**

**"Aero.1000 Instance 4 Program 1 loudness OK."**

**::= 0**

**inst4-pgm1-outlm-alarm TRAP-TYPE**

**ENTERPRISE inst4-pgm1-outlm-alarm**

**DESCRIPTION**

**"Aero.1000 Instance 4 Program 1 loudness out of range."**

**::= 1**

**--**

**-- inst4-pgm1b**

**--**

**inst4-pgm1b-silence OBJECT-TYPE**

**SYNTAX INTEGER {unavailable (-1), ok (0), silence (1)}**

**ACCESS read-only**

**STATUS optional**

**DESCRIPTION**

**"Instance 4 Program 1b silence."**

**DEFVAL { -1 }**

**::= { inst4-pgm1b 1 }**

**inst4-pgm1b-outlm OBJECT-TYPE**

**SYNTAX INTEGER {{-144..0}}**

**ACCESS read-only**

**STATUS optional**

**DESCRIPTION**

"Instance 4 Program 1b loudness dB LKFS / LUFS."

DEFVAL { -1 }

::= { inst4-pgm1b 2 }

**inst4-pgm1b-outlm-alarm OBJECT-TYPE**

**SYNTAX** INTEGER {unavailable (-1), ok (0), out-of-range (1)}

**ACCESS** read-only

**STATUS** optional

**DESCRIPTION**

"Instance 4 Program 1b loudness out of range."

DEFVAL { -1 }

::= { inst4-pgm1b 3 }

--

-- inst4-pgm1b traps

--

**inst4-pgm1b-audio-ok TRAP-TYPE**

**ENTERPRISE** inst4-pgm1b-silence

**DESCRIPTION**

"Aero.1000 Instance 4 Program 1b audio OK."

::= 0

**inst4-pgm1b-audio-loss TRAP-TYPE**

**ENTERPRISE** inst4-pgm1b-silence

**DESCRIPTION**

"Aero.1000 Instance 4 Program 1b audio loss."

::= 1

**inst4-pgm1b-outlm-ok TRAP-TYPE**

**ENTERPRISE inst4-pgm1b-outlm-alarm**

**DESCRIPTION**

"Aero.1000 Instance 4 Program 1b loudness OK."

::= 0

**inst4-pgm1b-outlm-alarm TRAP-TYPE**

**ENTERPRISE inst4-pgm1b-outlm-alarm**

**DESCRIPTION**

"Aero.1000 Instance 4 Program 1b loudness out of range."

::= 1

--

-- inst4-pgm1c

--

**inst4-pgm1c-silence OBJECT-TYPE**

**SYNTAX** INTEGER {unavailable (-1), ok (0), silence (1)}

**ACCESS** read-only

**STATUS** optional

**DESCRIPTION**

"Instance 4 Program 1c silence."

**DEFVAL** { -1 }

::= { inst4-pgm1c 1 }

**inst4-pgm1c-outlm OBJECT-TYPE**

**SYNTAX** INTEGER {{-144..0}}

**ACCESS** read-only

**STATUS** optional

**DESCRIPTION**

"Instance 4 Program 1c loudness dB LKFS / LUFS."

**DEFVAL** { -1 }

::= { inst4-pgm1c 2 }

**inst4-pgm1c-outlm-alarm OBJECT-TYPE**

**SYNTAX** INTEGER {unavailable (-1), ok (0), out-of-range (1)}

**ACCESS** read-only

**STATUS** optional

**DESCRIPTION**

"Instance 4 Program 1c loudness out of range."

**DEFVAL** { -1 }

::= { inst4-pgm1c 3 }

--

-- inst4-pgm1c traps

--

**inst4-pgm1c-audio-ok TRAP-TYPE**

**ENTERPRISE** inst4-pgm1c-silence

**DESCRIPTION**

"Aero.1000 Instance 4 Program 1c audio OK."

::= 0

**inst4-pgm1c-audio-loss TRAP-TYPE**

**ENTERPRISE** inst4-pgm1c-silence

**DESCRIPTION**

"Aero.1000 Instance 4 Program 1c audio loss."

::= 1

**inst4-pgm1c-outlm-ok TRAP-TYPE**

**ENTERPRISE** inst4-pgm1c-outlm-alarm

**DESCRIPTION**

"Aero.1000 Instance 4 Program 1c loudness OK."



::= 0

**inst4-pgm1c-outlm-alarm TRAP-TYPE**

**ENTERPRISE inst4-pgm1c-outlm-alarm**

**DESCRIPTION**

**"Aero.1000 Instance 4 Program 1c loudness out of range."**

::= 1

--

-- inst4-pgm2

--

**inst4-pgm2-silence OBJECT-TYPE**

**SYNTAX INTEGER {unavailable (-1), ok (0), silence (1)}**

**ACCESS read-only**

**STATUS optional**

**DESCRIPTION**

**"Instance 4 Program 2 silence."**

**DEFVAL { -1 }**

**::= { inst4-pgm2 1 }**

**inst4-pgm2-outlm OBJECT-TYPE**

**SYNTAX INTEGER {{-144..0}}**

**ACCESS read-only**

**STATUS optional**

**DESCRIPTION**

**"Instance 4 Program 2 loudness dB LKFS / LUFS."**

**DEFVAL { -1 }**

**::= { inst4-pgm2 2 }**

**inst4-pgm2-outlm-alarm OBJECT-TYPE**

```

SYNTAX    INTEGER {unavailable (-1), ok (0), out-of-range (1)}

ACCESS    read-only

STATUS    optional

DESCRIPTION

    "Instance 4 Program 2 loudness out of range."

DEFVAL { -1 }

::= { inst4-pgm2 3 }

--

-- inst4-pgm2 traps

--

inst4-pgm2-audio-ok TRAP-TYPE

    ENTERPRISE inst4-pgm2-silence

    DESCRIPTION

        "Aero.1000 Instance 4 Program 2 audio OK."

    ::= 0

inst4-pgm2-audio-loss TRAP-TYPE

    ENTERPRISE inst4-pgm2-silence

    DESCRIPTION

        "Aero.1000 Instance 4 Program 2 audio loss."

    ::= 1

inst4-pgm2-outlm-ok TRAP-TYPE

    ENTERPRISE inst4-pgm2-outlm-alarm

    DESCRIPTION

        "Aero.1000 Instance 4 Program 2 loudness OK."

    ::= 0

inst4-pgm2-outlm-alarm TRAP-TYPE

```

**ENTERPRISE inst4-pgm2-outlm-alarm**

**DESCRIPTION**

"Aero.1000 Instance 4 Program 2 loudness out of range."

::= 1

--

-- inst4-pgm2r

--

**inst4-pgm2r-silence OBJECT-TYPE**

**SYNTAX** INTEGER {unavailable (-1), ok (0), silence (1)}

**ACCESS** read-only

**STATUS** optional

**DESCRIPTION**

"Instance 4 Program 2r silence."

**DEFVAL** { -1 }

::= { inst4-pgm2r 1 }

**inst4-pgm2r-outlm OBJECT-TYPE**

**SYNTAX** INTEGER {{-144..0}}

**ACCESS** read-only

**STATUS** optional

**DESCRIPTION**

"Instance 4 Program 2r loudness dB LKFS / LUFS."

**DEFVAL** { -1 }

::= { inst4-pgm2r 2 }

**inst4-pgm2r-outlm-alarm OBJECT-TYPE**

**SYNTAX** INTEGER {unavailable (-1), ok (0), out-of-range (1)}

**ACCESS** read-only

**STATUS** optional

**DESCRIPTION**

"Instance 4 Program 2r loudness out of range."

DEFVAL { -1 }

::= { inst4-pgm2r 3 }

--

-- inst4-pgm2r traps

--

**inst4-pgm2r-audio-ok TRAP-TYPE**

ENTERPRISE inst4-pgm2r-silence

**DESCRIPTION**

"Aero.1000 Instance 4 Program 2r audio OK."

::= 0

**inst4-pgm2r-audio-loss TRAP-TYPE**

ENTERPRISE inst4-pgm2r-silence

**DESCRIPTION**

"Aero.1000 Instance 4 Program 2r audio loss."

::= 1

**inst4-pgm2r-outlm-ok TRAP-TYPE**

ENTERPRISE inst4-pgm2r-outlm-alarm

**DESCRIPTION**

"Aero.1000 Instance 4 Program 2r loudness OK."

::= 0

**inst4-pgm2r-outlm-alarm TRAP-TYPE**

ENTERPRISE inst4-pgm2r-outlm-alarm

**DESCRIPTION**

"Aero.1000 Instance 4 Program 2r loudness out of range."

```
 ::= 1
--
-- inst4-pgm3
--
inst4-pgm3-silence OBJECT-TYPE
    SYNTAX  INTEGER {unavailable (-1), ok (0), silence (1)}
    ACCESS  read-only
    STATUS  optional
    DESCRIPTION
        "Instance 4 Program 3 silence."
    DEFVAL { -1 }
    ::= { inst4-pgm3 1 }
```

```
inst4-pgm3-outlm OBJECT-TYPE
    SYNTAX  INTEGER {{-144..0}}
    ACCESS  read-only
    STATUS  optional
    DESCRIPTION
        "Instance 4 Program 3 loudness dB LKFS / LUFS."
    DEFVAL { -1 }
    ::= { inst4-pgm3 2 }
```

```
inst4-pgm3-outlm-alarm OBJECT-TYPE
    SYNTAX  INTEGER {unavailable (-1), ok (0), out-of-range (1)}
    ACCESS  read-only
    STATUS  optional
    DESCRIPTION
        "Instance 4 Program 3 loudness out of range."
    DEFVAL { -1 }
```

```

 ::= { inst4-pgm3 3 }
--
-- inst4-pgm3 traps
--
inst4-pgm3-audio-ok TRAP-TYPE
    ENTERPRISE inst4-pgm3-silence
    DESCRIPTION
        "Aero.1000 Instance 4 Program 3 audio OK."
    ::= 0

inst4-pgm3-audio-loss TRAP-TYPE
    ENTERPRISE inst4-pgm3-silence
    DESCRIPTION
        "Aero.1000 Instance 4 Program 3 audio loss."
    ::= 1

inst4-pgm3-outlm-ok TRAP-TYPE
    ENTERPRISE inst4-pgm3-outlm-alarm
    DESCRIPTION
        "Aero.1000 Instance 4 Program 3 loudness OK."
    ::= 0

inst4-pgm3-outlm-alarm TRAP-TYPE
    ENTERPRISE inst4-pgm3-outlm-alarm
    DESCRIPTION
        "Aero.1000 Instance 4 Program 3 loudness out of range."
    ::= 1
-- ***** Instance 5 *****
--

```

-- inst5-pgm1

--

**inst5-pgm1-silence OBJECT-TYPE**

**SYNTAX** INTEGER {unavailable (-1), ok (0), silence (1)}

**ACCESS** read-only

**STATUS** optional

**DESCRIPTION**

"Instance 5 Program 1 silence."

**DEFVAL** { -1 }

**::=** { inst5-pgm1 1 }

**inst5-pgm1-outlm OBJECT-TYPE**

**SYNTAX** INTEGER {{-144..0}}

**ACCESS** read-only

**STATUS** optional

**DESCRIPTION**

"Instance 5 Program 1 loudness dB LKFS / LUFS."

**DEFVAL** { -1 }

**::=** { inst5-pgm1 2 }

**inst5-pgm1-outlm-alarm OBJECT-TYPE**

**SYNTAX** INTEGER {unavailable (-1), ok (0), out-of-range (1)}

**ACCESS** read-only

**STATUS** optional

**DESCRIPTION**

"Instance 5 Program 1 loudness out of range."

**DEFVAL** { -1 }

**::=** { inst5-pgm1 3 }

--

-- inst5-pgm1 traps

--

**inst5-pgm1-audio-ok TRAP-TYPE**

**ENTERPRISE inst5-pgm1-silence**

**DESCRIPTION**

**"Aero.1000 Instance 5 Program 1 audio OK."**

**::= 0**

**inst5-pgm1-audio-loss TRAP-TYPE**

**ENTERPRISE inst5-pgm1-silence**

**DESCRIPTION**

**"Aero.1000 Instance 5 Program 1 audio loss."**

**::= 1**

**inst5-pgm1-outlm-ok TRAP-TYPE**

**ENTERPRISE inst5-pgm1-outlm-alarm**

**DESCRIPTION**

**"Aero.1000 Instance 5 Program 1 loudness OK."**

**::= 0**

**inst5-pgm1-outlm-alarm TRAP-TYPE**

**ENTERPRISE inst5-pgm1-outlm-alarm**

**DESCRIPTION**

**"Aero.1000 Instance 5 Program 1 loudness out of range."**

**::= 1**

--



-- inst5-pgm1b

--

**inst5-pgm1b-silence OBJECT-TYPE**

**SYNTAX** INTEGER {unavailable (-1), ok (0), silence (1)}

**ACCESS** read-only

**STATUS** optional

**DESCRIPTION**

"Instance 5 Program 1b silence."

**DEFVAL** { -1 }

**::=** { inst5-pgm1b 1 }

**inst5-pgm1b-outlm OBJECT-TYPE**

**SYNTAX** INTEGER {(-144..0)}

**ACCESS** read-only

**STATUS** optional

**DESCRIPTION**

"Instance 5 Program 1b loudness dB LKFS / LUFS."

**DEFVAL** { -1 }

**::=** { inst5-pgm1b 2 }

**inst5-pgm1b-outlm-alarm OBJECT-TYPE**

**SYNTAX** INTEGER {unavailable (-1), ok (0), out-of-range (1)}

**ACCESS** read-only

**STATUS** optional

**DESCRIPTION**

"Instance 5 Program 1b loudness out of range."

**DEFVAL** { -1 }

**::=** { inst5-pgm1b 3 }

--

-- inst5-pgm1b traps

--

**inst5-pgm1b-audio-ok TRAP-TYPE**

**ENTERPRISE inst5-pgm1b-silence**

**DESCRIPTION**

**"Aero.1000 Instance 5 Program 1b audio OK."**

**::= 0**

**inst5-pgm1b-audio-loss TRAP-TYPE**

**ENTERPRISE inst5-pgm1b-silence**

**DESCRIPTION**

**"Aero.1000 Instance 5 Program 1b audio loss."**

**::= 1**

**inst5-pgm1b-outlm-ok TRAP-TYPE**

**ENTERPRISE inst5-pgm1b-outlm-alarm**

**DESCRIPTION**

**"Aero.1000 Instance 5 Program 1b loudness OK."**

**::= 0**

**inst5-pgm1b-outlm-alarm TRAP-TYPE**

**ENTERPRISE inst5-pgm1b-outlm-alarm**

**DESCRIPTION**

**"Aero.1000 Instance 5 Program 1b loudness out of range."**

**::= 1**

--

-- inst5-pgm1c

--

**inst5-pgm1c-silence OBJECT-TYPE**

**SYNTAX** INTEGER {unavailable (-1), ok (0), silence (1)}

**ACCESS** read-only

**STATUS** optional

**DESCRIPTION**

"Instance 5 Program 1c silence."

**DEFVAL** { -1 }

::= { inst5-pgm1c 1 }

**inst5-pgm1c-outlm** OBJECT-TYPE

**SYNTAX** INTEGER {(-144..0)}

**ACCESS** read-only

**STATUS** optional

**DESCRIPTION**

"Instance 5 Program 1c loudness dB LKFS / LUFS."

**DEFVAL** { -1 }

::= { inst5-pgm1c 2 }

**inst5-pgm1c-outlm-alarm** OBJECT-TYPE

**SYNTAX** INTEGER {unavailable (-1), ok (0), out-of-range (1)}

**ACCESS** read-only

**STATUS** optional

**DESCRIPTION**

"Instance 5 Program 1c loudness out of range."

**DEFVAL** { -1 }

::= { inst5-pgm1c 3 }

--

-- inst5-pgm1c traps

--

**inst5-pgm1c-audio-ok** TRAP-TYPE

**ENTERPRISE inst5-pgm1c-silence**

**DESCRIPTION**

"Aero.1000 Instance 5 Program 1c audio OK."

::= 0

**inst5-pgm1c-audio-loss TRAP-TYPE**

**ENTERPRISE inst5-pgm1c-silence**

**DESCRIPTION**

"Aero.1000 Instance 5 Program 1c audio loss."

::= 1

**inst5-pgm1c-outlm-ok TRAP-TYPE**

**ENTERPRISE inst5-pgm1c-outlm-alarm**

**DESCRIPTION**

"Aero.1000 Instance 5 Program 1c loudness OK."

::= 0

**inst5-pgm1c-outlm-alarm TRAP-TYPE**

**ENTERPRISE inst5-pgm1c-outlm-alarm**

**DESCRIPTION**

"Aero.1000 Instance 5 Program 1c loudness out of range."

::= 1

--

-- inst5-pgm2

--

**inst5-pgm2-silence OBJECT-TYPE**

**SYNTAX** INTEGER {unavailable (-1), ok (0), silence (1)}

**ACCESS** read-only

**STATUS** optional

**DESCRIPTION**

"Instance 5 Program 2 silence."

DEFVAL { -1 }

::= { inst5-pgm2 1 }

**inst5-pgm2-outlm OBJECT-TYPE**

**SYNTAX** INTEGER {(-144..0)}

**ACCESS** read-only

**STATUS** optional

**DESCRIPTION**

"Instance 5 Program 2 loudness dB LKFS / LUFS."

DEFVAL { -1 }

::= { inst5-pgm2 2 }

**inst5-pgm2-outlm-alarm OBJECT-TYPE**

**SYNTAX** INTEGER {unavailable (-1), ok (0), out-of-range (1)}

**ACCESS** read-only

**STATUS** optional

**DESCRIPTION**

"Instance 5 Program 2 loudness out of range."

DEFVAL { -1 }

::= { inst5-pgm2 3 }

--

-- inst5-pgm2 traps

--

**inst5-pgm2-audio-ok TRAP-TYPE**

**ENTERPRISE** inst5-pgm2-silence

**DESCRIPTION**

"Aero.1000 Instance 5 Program 2 audio OK."

**::= 0**

**inst5-pgm2-audio-loss TRAP-TYPE**

**ENTERPRISE inst5-pgm2-silence**

**DESCRIPTION**

**"Aero.1000 Instance 5 Program 2 audio loss."**

**::= 1**

**inst5-pgm2-outlm-ok TRAP-TYPE**

**ENTERPRISE inst5-pgm2-outlm-alarm**

**DESCRIPTION**

**"Aero.1000 Instance 5 Program 2 loudness OK."**

**::= 0**

**inst5-pgm2-outlm-alarm TRAP-TYPE**

**ENTERPRISE inst5-pgm2-outlm-alarm**

**DESCRIPTION**

**"Aero.1000 Instance 5 Program 2 loudness out of range."**

**::= 1**

**--**

**-- inst5-pgm2r**

**--**

**inst5-pgm2r-silence OBJECT-TYPE**

**SYNTAX INTEGER {unavailable (-1), ok (0), silence (1)}**

**ACCESS read-only**

**STATUS optional**

**DESCRIPTION**

**"Instance 5 Program 2r silence."**

**DEFVAL { -1 }**

::= { inst5-pgm2r 1 }

**inst5-pgm2r-outlm OBJECT-TYPE**

**SYNTAX** INTEGER {(-144..0)}

**ACCESS** read-only

**STATUS** optional

**DESCRIPTION**

"Instance 5 Program 2r loudness dB LKFS / LUFS."

**DEFVAL** { -1 }

::= { inst5-pgm2r 2 }

**inst5-pgm2r-outlm-alarm OBJECT-TYPE**

**SYNTAX** INTEGER {unavailable (-1), ok (0), out-of-range (1)}

**ACCESS** read-only

**STATUS** optional

**DESCRIPTION**

"Instance 5 Program 2r loudness out of range."

**DEFVAL** { -1 }

::= { inst5-pgm2r 3 }

--

-- inst5-pgm2r traps

--

**inst5-pgm2r-audio-ok TRAP-TYPE**

**ENTERPRISE** inst5-pgm2r-silence

**DESCRIPTION**

"Aero.1000 Instance 5 Program 2r audio OK."

::= 0

**inst5-pgm2r-audio-loss TRAP-TYPE**

**ENTERPRISE inst5-pgm2r-silence**

**DESCRIPTION**

**"Aero.1000 Instance 5 Program 2r audio loss."**

**::= 1**

**inst5-pgm2r-outlm-ok TRAP-TYPE**

**ENTERPRISE inst5-pgm2r-outlm-alarm**

**DESCRIPTION**

**"Aero.1000 Instance 5 Program 2r loudness OK."**

**::= 0**

**inst5-pgm2r-outlm-alarm TRAP-TYPE**

**ENTERPRISE inst5-pgm2r-outlm-alarm**

**DESCRIPTION**

**"Aero.1000 Instance 5 Program 2r loudness out of range."**

**::= 1**

--

-- inst5-pgm3

--

**inst5-pgm3-silence OBJECT-TYPE**

**SYNTAX INTEGER {unavailable (-1), ok (0), silence (1)}**

**ACCESS read-only**

**STATUS optional**

**DESCRIPTION**

**"Instance 5 Program 3 silence."**

**DEFVAL { -1 }**

**::= { inst5-pgm3 1 }**



**inst5-pgm3-outlm OBJECT-TYPE**

**SYNTAX** INTEGER {(-144..0)}

**ACCESS** read-only

**STATUS** optional

**DESCRIPTION**

"Instance 5 Program 3 loudness dB LKFS / LUFS."

**DEFVAL** { -1 }

**::=** { inst5-pgm3 2 }

**inst5-pgm3-outlm-alarm OBJECT-TYPE**

**SYNTAX** INTEGER {unavailable (-1), ok (0), out-of-range (1)}

**ACCESS** read-only

**STATUS** optional

**DESCRIPTION**

"Instance 5 Program 3 loudness out of range."

**DEFVAL** { -1 }

**::=** { inst5-pgm3 3 }

--

-- inst5-pgm3 traps

--

**inst5-pgm3-audio-ok TRAP-TYPE**

**ENTERPRISE** inst5-pgm3-silence

**DESCRIPTION**

"Aero.1000 Instance 5 Program 3 audio OK."

**::=** 0

**inst5-pgm3-audio-loss TRAP-TYPE**

**ENTERPRISE** inst5-pgm3-silence

**DESCRIPTION**

**"Aero.1000 Instance 5 Program 3 audio loss."**

**::= 1**

**inst5-pgm3-outlm-ok TRAP-TYPE**

**ENTERPRISE inst5-pgm3-outlm-alarm**

**DESCRIPTION**

**"Aero.1000 Instance 5 Program 3 loudness OK."**

**::= 0**

**inst5-pgm3-outlm-alarm TRAP-TYPE**

**ENTERPRISE inst5-pgm3-outlm-alarm**

**DESCRIPTION**

**"Aero.1000 Instance 5 Program 3 loudness out of range."**

**::= 1**

**-- \*\*\*\*\* Instance 6 \*\*\*\*\***

**--**

**-- inst6-pgm1**

**--**

**inst6-pgm1-silence OBJECT-TYPE**

**SYNTAX INTEGER {unavailable (-1), ok (0), silence (1)}**

**ACCESS read-only**

**STATUS optional**

**DESCRIPTION**

**"Instance 6 Program 1 silence."**

**DEFVAL { -1 }**

**::= { inst6-pgm1 1 }**

**inst6-pgm1-outlm OBJECT-TYPE**

**SYNTAX INTEGER {(-144..0)}**

**ACCESS** read-only

**STATUS** optional

**DESCRIPTION**

"Instance 6 Program 1 loudness dB LKFS / LUFS."

**DEFVAL** { -1 }

::= { inst6-pgm1 2 }

**inst6-pgm1-outlm-alarm OBJECT-TYPE**

**SYNTAX** INTEGER {unavailable (-1), ok (0), out-of-range (1)}

**ACCESS** read-only

**STATUS** optional

**DESCRIPTION**

"Instance 6 Program 1 loudness out of range."

**DEFVAL** { -1 }

::= { inst6-pgm1 3 }

--

-- inst6-pgm1 traps

--

**inst6-pgm1-audio-ok TRAP-TYPE**

**ENTERPRISE** inst6-pgm1-silence

**DESCRIPTION**

"Aero.1000 Instance 6 Program 1 audio OK."

::= 0

**inst6-pgm1-audio-loss TRAP-TYPE**

**ENTERPRISE** inst6-pgm1-silence

**DESCRIPTION**

"Aero.1000 Instance 6 Program 1 audio loss."

::= 1

**inst6-pgm1-outlm-ok TRAP-TYPE**

**ENTERPRISE inst6-pgm1-outlm-alarm**

**DESCRIPTION**

**"Aero.1000 Instance 6 Program 1 loudness OK."**

**::= 0**

**inst6-pgm1-outlm-alarm TRAP-TYPE**

**ENTERPRISE inst6-pgm1-outlm-alarm**

**DESCRIPTION**

**"Aero.1000 Instance 6 Program 1 loudness out of range."**

**::= 1**

**--**

**-- inst6-pgm1b**

**--**

**inst6-pgm1b-silence OBJECT-TYPE**

**SYNTAX INTEGER {unavailable (-1), ok (0), silence (1)}**

**ACCESS read-only**

**STATUS optional**

**DESCRIPTION**

**"Instance 6 Program 1b silence."**

**DEFVAL { -1 }**

**::= { inst6-pgm1b 1 }**

**inst6-pgm1b-outlm OBJECT-TYPE**

**SYNTAX INTEGER {(-144..0)}**

**ACCESS read-only**

**STATUS optional**

**DESCRIPTION**

"Instance 6 Program 1b loudness dB LKFS / LUFS."

DEFVAL { -1 }

::= { inst6-pgm1b 2 }

**inst6-pgm1b-outlm-alarm OBJECT-TYPE**

**SYNTAX** INTEGER {unavailable (-1), ok (0), out-of-range (1)}

**ACCESS** read-only

**STATUS** optional

**DESCRIPTION**

"Instance 6 Program 1b loudness out of range."

DEFVAL { -1 }

::= { inst6-pgm1b 3 }

--

-- inst6-pgm1b traps

--

**inst6-pgm1b-audio-ok TRAP-TYPE**

**ENTERPRISE** inst6-pgm1b-silence

**DESCRIPTION**

"Aero.1000 Instance 6 Program 1b audio OK."

::= 0

**inst6-pgm1b-audio-loss TRAP-TYPE**

**ENTERPRISE** inst6-pgm1b-silence

**DESCRIPTION**

"Aero.1000 Instance 6 Program 1b audio loss."

::= 1

**inst6-pgm1b-outlm-ok TRAP-TYPE**

**ENTERPRISE inst6-pgm1b-outlm-alarm**

**DESCRIPTION**

**"Aero.1000 Instance 6 Program 1b loudness OK."**

**::= 0**

**inst6-pgm1b-outlm-alarm TRAP-TYPE**

**ENTERPRISE inst6-pgm1b-outlm-alarm**

**DESCRIPTION**

**"Aero.1000 Instance 6 Program 1b loudness out of range."**

**::= 1**

**--**

**-- inst6-pgm1c**

**--**

**inst6-pgm1c-silence OBJECT-TYPE**

**SYNTAX INTEGER {unavailable (-1), ok (0), silence (1)}**

**ACCESS read-only**

**STATUS optional**

**DESCRIPTION**

**"Instance 6 Program 1c silence."**

**DEFVAL { -1 }**

**::= { inst6-pgm1c 1 }**

**inst6-pgm1c-outlm OBJECT-TYPE**

**SYNTAX INTEGER {(-144..0)}**

**ACCESS read-only**

**STATUS optional**

**DESCRIPTION**

**"Instance 6 Program 1c loudness dB LKFS / LUFS."**

DEFVAL { -1 }

::= { inst6-pgm1c 2 }

**inst6-pgm1c-outlm-alarm OBJECT-TYPE**

**SYNTAX** INTEGER {unavailable (-1), ok (0), out-of-range (1)}

**ACCESS** read-only

**STATUS** optional

**DESCRIPTION**

"Instance 6 Program 1c loudness out of range."

DEFVAL { -1 }

::= { inst6-pgm1c 3 }

--

-- inst6-pgm1c traps

--

**inst6-pgm1c-audio-ok TRAP-TYPE**

**ENTERPRISE** inst6-pgm1c-silence

**DESCRIPTION**

"Aero.1000 Instance 6 Program 1c audio OK."

::= 0

**inst6-pgm1c-audio-loss TRAP-TYPE**

**ENTERPRISE** inst6-pgm1c-silence

**DESCRIPTION**

"Aero.1000 Instance 6 Program 1c audio loss."

::= 1

**inst6-pgm1c-outlm-ok TRAP-TYPE**

**ENTERPRISE** inst6-pgm1c-outlm-alarm

**DESCRIPTION**

**"Aero.1000 Instance 6 Program 1c loudness OK."**

**::= 0**

**inst6-pgm1c-outlm-alarm TRAP-TYPE**

**ENTERPRISE inst6-pgm1c-outlm-alarm**

**DESCRIPTION**

**"Aero.1000 Instance 6 Program 1c loudness out of range."**

**::= 1**

**--**

**-- inst6-pgm2**

**--**

**inst6-pgm2-silence OBJECT-TYPE**

**SYNTAX INTEGER {unavailable (-1), ok (0), silence (1)}**

**ACCESS read-only**

**STATUS optional**

**DESCRIPTION**

**"Instance 6 Program 2 silence."**

**DEFVAL { -1 }**

**::= { inst6-pgm2 1 }**

**inst6-pgm2-outlm OBJECT-TYPE**

**SYNTAX INTEGER {(-144..0)}**

**ACCESS read-only**

**STATUS optional**

**DESCRIPTION**

**"Instance 6 Program 2 loudness dB LKFS / LUFS."**

**DEFVAL { -1 }**

**::= { inst6-pgm2 2 }**



**inst6-pgm2-outlm-alarm OBJECT-TYPE**

**SYNTAX** INTEGER {unavailable (-1), ok (0), out-of-range (1)}

**ACCESS** read-only

**STATUS** optional

**DESCRIPTION**

"Instance 6 Program 2 loudness out of range."

**DEFVAL** { -1 }

**::=** { inst6-pgm2 3 }

--

-- inst6-pgm2 traps

--

**inst6-pgm2-audio-ok TRAP-TYPE**

**ENTERPRISE** inst6-pgm2-silence

**DESCRIPTION**

"Aero.1000 Instance 6 Program 2 audio OK."

**::=** 0

**inst6-pgm2-audio-loss TRAP-TYPE**

**ENTERPRISE** inst6-pgm2-silence

**DESCRIPTION**

"Aero.1000 Instance 6 Program 2 audio loss."

**::=** 1

**inst6-pgm2-outlm-ok TRAP-TYPE**

**ENTERPRISE** inst6-pgm2-outlm-alarm

**DESCRIPTION**

"Aero.1000 Instance 6 Program 2 loudness OK."

**::=** 0

**inst6-pgm2-outlm-alarm TRAP-TYPE**

**ENTERPRISE inst6-pgm2-outlm-alarm**

**DESCRIPTION**

"Aero.1000 Instance 6 Program 2 loudness out of range."

::= 1

--

-- inst6-pgm2r

--

**inst6-pgm2r-silence OBJECT-TYPE**

**SYNTAX INTEGER {unavailable (-1), ok (0), silence (1)}**

**ACCESS read-only**

**STATUS optional**

**DESCRIPTION**

"Instance 6 Program 2r silence."

**DEFVAL { -1 }**

::= { inst6-pgm2r 1 }

**inst6-pgm2r-outlm OBJECT-TYPE**

**SYNTAX INTEGER {(-144..0)}**

**ACCESS read-only**

**STATUS optional**

**DESCRIPTION**

"Instance 6 Program 2r loudness dB LKFS / LUFS."

**DEFVAL { -1 }**

::= { inst6-pgm2r 2 }

**inst6-pgm2r-outlm-alarm OBJECT-TYPE**

**SYNTAX INTEGER {unavailable (-1), ok (0), out-of-range (1)}**

**ACCESS read-only**

**STATUS optional**

**DESCRIPTION**

"Instance 6 Program 2r loudness out of range."

**DEFVAL { -1 }**

**::= { inst6-pgm2r 3 }**

--

-- inst6-pgm2r traps

--

**inst6-pgm2r-audio-ok TRAP-TYPE**

**ENTERPRISE inst6-pgm2r-silence**

**DESCRIPTION**

"Aero.1000 Instance 6 Program 2r audio OK."

**::= 0**

**inst6-pgm2r-audio-loss TRAP-TYPE**

**ENTERPRISE inst6-pgm2r-silence**

**DESCRIPTION**

"Aero.1000 Instance 6 Program 2r audio loss."

**::= 1**

**inst6-pgm2r-outlm-ok TRAP-TYPE**

**ENTERPRISE inst6-pgm2r-outlm-alarm**

**DESCRIPTION**

"Aero.1000 Instance 6 Program 2r loudness OK."

**::= 0**

**inst6-pgm2r-outlm-alarm TRAP-TYPE**

**ENTERPRISE inst6-pgm2r-outlm-alarm**

**DESCRIPTION**

**"Aero.1000 Instance 6 Program 2r loudness out of range."**

**::= 1**

**--**

**-- inst6-pgm3**

**--**

**inst6-pgm3-silence OBJECT-TYPE**

**SYNTAX INTEGER {unavailable (-1), ok (0), silence (1)}**

**ACCESS read-only**

**STATUS optional**

**DESCRIPTION**

**"Instance 6 Program 3 silence."**

**DEFVAL { -1 }**

**::= { inst6-pgm3 1 }**

**inst6-pgm3-outlm OBJECT-TYPE**

**SYNTAX INTEGER {(-144..0)}**

**ACCESS read-only**

**STATUS optional**

**DESCRIPTION**

**"Instance 6 Program 3 loudness dB LKFS / LUFS."**

**DEFVAL { -1 }**

**::= { inst6-pgm3 2 }**

**inst6-pgm3-outlm-alarm OBJECT-TYPE**

**SYNTAX INTEGER {unavailable (-1), ok (0), out-of-range (1)}**

**ACCESS read-only**

**STATUS optional**

**DESCRIPTION**

**"Instance 6 Program 3 loudness out of range."**

```

DEFVAL { -1 }

::= { inst6-pgm3 3 }

--

-- inst6-pgm3 traps

--

inst6-pgm3-audio-ok TRAP-TYPE

ENTERPRISE inst6-pgm3-silence

DESCRIPTION

    "Aero.1000 Instance 6 Program 3 audio OK."

::= 0

inst6-pgm3-audio-loss TRAP-TYPE

ENTERPRISE inst6-pgm3-silence

DESCRIPTION

    "Aero.1000 Instance 6 Program 3 audio loss."

::= 1

inst6-pgm3-outlm-ok TRAP-TYPE

ENTERPRISE inst6-pgm3-outlm-alarm

DESCRIPTION

    "Aero.1000 Instance 6 Program 3 loudness OK."

::= 0

inst6-pgm3-outlm-alarm TRAP-TYPE

ENTERPRISE inst6-pgm3-outlm-alarm

DESCRIPTION

    "Aero.1000 Instance 6 Program 3 loudness out of range."

::= 1

-- ***** Instance 7 *****

```

--

-- inst7-pgm1

--

**inst7-pgm1-silence OBJECT-TYPE**

**SYNTAX** INTEGER {unavailable (-1), ok (0), silence (1)}

**ACCESS** read-only

**STATUS** optional

**DESCRIPTION**

"Instance 7 Program 1 silence."

**DEFVAL** { -1 }

**::=** { inst7-pgm1 1 }

**inst7-pgm1-outlm OBJECT-TYPE**

**SYNTAX** INTEGER {{-144..0}}

**ACCESS** read-only

**STATUS** optional

**DESCRIPTION**

"Instance 7 Program 1 loudness dB LKFS / LUFS."

**DEFVAL** { -1 }

**::=** { inst7-pgm1 2 }

**inst7-pgm1-outlm-alarm OBJECT-TYPE**

**SYNTAX** INTEGER {unavailable (-1), ok (0), out-of-range (1)}

**ACCESS** read-only

**STATUS** optional

**DESCRIPTION**

"Instance 7 Program 1 loudness out of range."

**DEFVAL** { -1 }

**::=** { inst7-pgm1 3 }

```
--  
-- inst7-pgm1 traps  
--  
inst7-pgm1-audio-ok TRAP-TYPE  
    ENTERPRISE inst7-pgm1-silence  
    DESCRIPTION  
        "Aero.1000 Instance 7 Program 1 audio OK."  
    ::= 0  
  
inst7-pgm1-audio-loss TRAP-TYPE  
    ENTERPRISE inst7-pgm1-silence  
    DESCRIPTION  
        "Aero.1000 Instance 7 Program 1 audio loss."  
    ::= 1  
  
inst7-pgm1-outlm-ok TRAP-TYPE  
    ENTERPRISE inst7-pgm1-outlm-alarm  
    DESCRIPTION  
        "Aero.1000 Instance 7 Program 1 loudness OK."  
    ::= 0  
  
inst7-pgm1-outlm-alarm TRAP-TYPE  
    ENTERPRISE inst7-pgm1-outlm-alarm  
    DESCRIPTION  
        "Aero.1000 Instance 7 Program 1 loudness out of range."  
    ::= 1  
--  
-- inst7-pgm1b  
--
```

**inst7-pgm1b-silence OBJECT-TYPE**

**SYNTAX** INTEGER {unavailable (-1), ok (0), silence (1)}

**ACCESS** read-only

**STATUS** optional

**DESCRIPTION**

"Instance 7 Program 1b silence."

**DEFVAL** { -1 }

**::=** { inst7-pgm1b 1 }

**inst7-pgm1b-outlm OBJECT-TYPE**

**SYNTAX** INTEGER {{-144..0}}

**ACCESS** read-only

**STATUS** optional

**DESCRIPTION**

"Instance 7 Program 1b loudness dB LKFS / LUFS."

**DEFVAL** { -1 }

**::=** { inst7-pgm1b 2 }

**inst7-pgm1b-outlm-alarm OBJECT-TYPE**

**SYNTAX** INTEGER {unavailable (-1), ok (0), out-of-range (1)}

**ACCESS** read-only

**STATUS** optional

**DESCRIPTION**

"Instance 7 Program 1b loudness out of range."

**DEFVAL** { -1 }

**::=** { inst7-pgm1b 3 }

--

-- inst7-pgm1b traps

--



**inst7-pgm1b-audio-ok TRAP-TYPE**

**ENTERPRISE inst7-pgm1b-silence**

**DESCRIPTION**

"Aero.1000 Instance 7 Program 1b audio OK."

::= 0

**inst7-pgm1b-audio-loss TRAP-TYPE**

**ENTERPRISE inst7-pgm1b-silence**

**DESCRIPTION**

"Aero.1000 Instance 7 Program 1b audio loss."

::= 1

**inst7-pgm1b-outlm-ok TRAP-TYPE**

**ENTERPRISE inst7-pgm1b-outlm-alarm**

**DESCRIPTION**

"Aero.1000 Instance 7 Program 1b loudness OK."

::= 0

**inst7-pgm1b-outlm-alarm TRAP-TYPE**

**ENTERPRISE inst7-pgm1b-outlm-alarm**

**DESCRIPTION**

"Aero.1000 Instance 7 Program 1b loudness out of range."

::= 1

--

-- inst7-pgm1c

--

**inst7-pgm1c-silence OBJECT-TYPE**

**SYNTAX INTEGER {unavailable (-1), ok (0), silence (1)}**

**ACCESS read-only**

**STATUS optional**

**DESCRIPTION**

"Instance 7 Program 1c silence."

**DEFVAL { -1 }**

**::= { inst7-pgm1c 1 }**

**inst7-pgm1c-outlm OBJECT-TYPE**

**SYNTAX INTEGER {(-144..0)}**

**ACCESS read-only**

**STATUS optional**

**DESCRIPTION**

"Instance 7 Program 1c loudness dB LKFS / LUFS."

**DEFVAL { -1 }**

**::= { inst7-pgm1c 2 }**

**inst7-pgm1c-outlm-alarm OBJECT-TYPE**

**SYNTAX INTEGER {unavailable (-1), ok (0), out-of-range (1)}**

**ACCESS read-only**

**STATUS optional**

**DESCRIPTION**

"Instance 7 Program 1c loudness out of range."

**DEFVAL { -1 }**

**::= { inst7-pgm1c 3 }**

--

-- inst7-pgm1c traps

--

**inst7-pgm1c-audio-ok TRAP-TYPE**

**ENTERPRISE inst7-pgm1c-silence**

**DESCRIPTION**

**"Aero.1000 Instance 7 Program 1c audio OK."**

**::= 0**

**inst7-pgm1c-audio-loss TRAP-TYPE**

**ENTERPRISE inst7-pgm1c-silence**

**DESCRIPTION**

**"Aero.1000 Instance 7 Program 1c audio loss."**

**::= 1**

**inst7-pgm1c-outlm-ok TRAP-TYPE**

**ENTERPRISE inst7-pgm1c-outlm-alarm**

**DESCRIPTION**

**"Aero.1000 Instance 7 Program 1c loudness OK."**

**::= 0**

**inst7-pgm1c-outlm-alarm TRAP-TYPE**

**ENTERPRISE inst7-pgm1c-outlm-alarm**

**DESCRIPTION**

**"Aero.1000 Instance 7 Program 1c loudness out of range."**

**::= 1**

**--**

**-- inst7-pgm2**

**--**

**inst7-pgm2-silence OBJECT-TYPE**

**SYNTAX** INTEGER {unavailable (-1), ok (0), silence (1)}

**ACCESS** read-only

**STATUS** optional

**DESCRIPTION**

"Instance 7 Program 2 silence."

**DEFVAL** { -1 }

::= { inst7-pgm2 1 }

**inst7-pgm2-outlm** OBJECT-TYPE

**SYNTAX** INTEGER {(-144..0)}

**ACCESS** read-only

**STATUS** optional

**DESCRIPTION**

"Instance 7 Program 2 loudness dB LKFS / LUFS."

**DEFVAL** { -1 }

::= { inst7-pgm2 2 }

**inst7-pgm2-outlm-alarm** OBJECT-TYPE

**SYNTAX** INTEGER {unavailable (-1), ok (0), out-of-range (1)}

**ACCESS** read-only

**STATUS** optional

**DESCRIPTION**

"Instance 7 Program 2 loudness out of range."

**DEFVAL** { -1 }

::= { inst7-pgm2 3 }

--

-- inst7-pgm2 traps

--

**inst7-pgm2-audio-ok** TRAP-TYPE

**ENTERPRISE inst7-pgm2-silence**

**DESCRIPTION**

"Aero.1000 Instance 7 Program 2 audio OK."

::= 0

**inst7-pgm2-audio-loss TRAP-TYPE**

**ENTERPRISE inst7-pgm2-silence**

**DESCRIPTION**

"Aero.1000 Instance 7 Program 2 audio loss."

::= 1

**inst7-pgm2-outlm-ok TRAP-TYPE**

**ENTERPRISE inst7-pgm2-outlm-alarm**

**DESCRIPTION**

"Aero.1000 Instance 7 Program 2 loudness OK."

::= 0

**inst7-pgm2-outlm-alarm TRAP-TYPE**

**ENTERPRISE inst7-pgm2-outlm-alarm**

**DESCRIPTION**

"Aero.1000 Instance 7 Program 2 loudness out of range."

::= 1

--

-- inst7-pgm2r

--

**inst7-pgm2r-silence OBJECT-TYPE**

**SYNTAX** INTEGER {unavailable (-1), ok (0), silence (1)}

**ACCESS** read-only

**STATUS** optional

**DESCRIPTION**

"Instance 7 Program 2r silence."

**DEFVAL** { -1 }

**::=** { inst7-pgm2r 1 }

**inst7-pgm2r-outlm** OBJECT-TYPE

**SYNTAX** INTEGER {(-144..0)}

**ACCESS** read-only

**STATUS** optional

**DESCRIPTION**

"Instance 7 Program 2r loudness dB LKFS / LUFS."

**DEFVAL** { -1 }

**::=** { inst7-pgm2r 2 }

**inst7-pgm2r-outlm-alarm** OBJECT-TYPE

**SYNTAX** INTEGER {unavailable (-1), ok (0), out-of-range (1)}

**ACCESS** read-only

**STATUS** optional

**DESCRIPTION**

"Instance 7 Program 2r loudness out of range."

**DEFVAL** { -1 }

**::=** { inst7-pgm2r 3 }

--

-- inst7-pgm2r traps

--

**inst7-pgm2r-audio-ok** TRAP-TYPE

**ENTERPRISE** inst7-pgm2r-silence

**DESCRIPTION**

**"Aero.1000 Instance 7 Program 2r audio OK."**

**::= 0**

**inst7-pgm2r-audio-loss TRAP-TYPE**

**ENTERPRISE inst7-pgm2r-silence**

**DESCRIPTION**

**"Aero.1000 Instance 7 Program 2r audio loss."**

**::= 1**

**inst7-pgm2r-outlm-ok TRAP-TYPE**

**ENTERPRISE inst7-pgm2r-outlm-alarm**

**DESCRIPTION**

**"Aero.1000 Instance 7 Program 2r loudness OK."**

**::= 0**

**inst7-pgm2r-outlm-alarm TRAP-TYPE**

**ENTERPRISE inst7-pgm2r-outlm-alarm**

**DESCRIPTION**

**"Aero.1000 Instance 7 Program 2r loudness out of range."**

**::= 1**

**--**

**-- inst7-pgm3**

**--**

**inst7-pgm3-silence OBJECT-TYPE**

**SYNTAX INTEGER {unavailable (-1), ok (0), silence (1)}**

**ACCESS read-only**

**STATUS optional**

**DESCRIPTION**

**"Instance 7 Program 3 silence."**

DEFVAL { -1 }

::= { inst7-pgm3 1 }

**inst7-pgm3-outlm OBJECT-TYPE**

**SYNTAX** INTEGER {(-144..0)}

**ACCESS** read-only

**STATUS** optional

**DESCRIPTION**

"Instance 7 Program 3 loudness dB LKFS / LUFS."

DEFVAL { -1 }

::= { inst7-pgm3 2 }

**inst7-pgm3-outlm-alarm OBJECT-TYPE**

**SYNTAX** INTEGER {unavailable (-1), ok (0), out-of-range (1)}

**ACCESS** read-only

**STATUS** optional

**DESCRIPTION**

"Instance 7 Program 3 loudness out of range."

DEFVAL { -1 }

::= { inst7-pgm3 3 }

--

-- inst7-pgm3 traps

--

**inst7-pgm3-audio-ok TRAP-TYPE**

**ENTERPRISE** inst7-pgm3-silence

**DESCRIPTION**

"Aero.1000 Instance 7 Program 3 audio OK."

::= 0



**inst7-pgm3-audio-loss TRAP-TYPE**

**ENTERPRISE inst7-pgm3-silence**

**DESCRIPTION**

**"Aero.1000 Instance 7 Program 3 audio loss."**

**::= 1**

**inst7-pgm3-outlm-ok TRAP-TYPE**

**ENTERPRISE inst7-pgm3-outlm-alarm**

**DESCRIPTION**

**"Aero.1000 Instance 7 Program 3 loudness OK."**

**::= 0**

**inst7-pgm3-outlm-alarm TRAP-TYPE**

**ENTERPRISE inst7-pgm3-outlm-alarm**

**DESCRIPTION**

**"Aero.1000 Instance 7 Program 3 loudness out of range."**

**::= 1**

**-- \*\*\*\*\* Instance 8 \*\*\*\*\***

**--**

**-- inst8-pgm1**

**--**

**inst8-pgm1-silence OBJECT-TYPE**

**SYNTAX INTEGER {unavailable (-1), ok (0), silence (1)}**

**ACCESS read-only**

**STATUS optional**

**DESCRIPTION**

**"Instance 8 Program 1 silence."**

**DEFVAL { -1 }**

**::= { inst8-pgm1 1 }**

**inst8-pgm1-outlm OBJECT-TYPE**

**SYNTAX** INTEGER {(-144..0)}

**ACCESS** read-only

**STATUS** optional

**DESCRIPTION**

"Instance 8 Program 1 loudness dB LKFS / LUFS."

**DEFVAL** { -1 }

**::=** { inst8-pgm1 2 }

**inst8-pgm1-outlm-alarm OBJECT-TYPE**

**SYNTAX** INTEGER {unavailable (-1), ok (0), out-of-range (1)}

**ACCESS** read-only

**STATUS** optional

**DESCRIPTION**

"Instance 8 Program 1 loudness out of range."

**DEFVAL** { -1 }

**::=** { inst8-pgm1 3 }

--

-- inst8-pgm1 traps

--

**inst8-pgm1-audio-ok TRAP-TYPE**

**ENTERPRISE** inst8-pgm1-silence

**DESCRIPTION**

"Aero.1000 Instance 8 Program 1 audio OK."

**::=** 0

**inst8-pgm1-audio-loss TRAP-TYPE**

**ENTERPRISE** inst8-pgm1-silence

**DESCRIPTION**

"Aero.1000 Instance 8 Program 1 audio loss."

::= 1

**inst8-pgm1-outlm-ok TRAP-TYPE**

**ENTERPRISE** inst8-pgm1-outlm-alarm

**DESCRIPTION**

"Aero.1000 Instance 8 Program 1 loudness OK."

::= 0

**inst8-pgm1-outlm-alarm TRAP-TYPE**

**ENTERPRISE** inst8-pgm1-outlm-alarm

**DESCRIPTION**

"Aero.1000 Instance 8 Program 1 loudness out of range."

::= 1

--

-- inst8-pgm1b

--

**inst8-pgm1b-silence OBJECT-TYPE**

**SYNTAX** INTEGER {unavailable (-1), ok (0), silence (1)}

**ACCESS** read-only

**STATUS** optional

**DESCRIPTION**

"Instance 8 Program 1b silence."

**DEFVAL** { -1 }

::= { inst8-pgm1b 1 }

**inst8-pgm1b-outlm OBJECT-TYPE**

**SYNTAX** INTEGER {(-144..0)}

**ACCESS** read-only

**STATUS** optional

**DESCRIPTION**

"Instance 8 Program 1b loudness dB LKFS / LUFS."

**DEFVAL** { -1 }

::= { inst8-pgm1b 2 }

**inst8-pgm1b-outlm-alarm OBJECT-TYPE**

**SYNTAX** INTEGER {unavailable (-1), ok (0), out-of-range (1)}

**ACCESS** read-only

**STATUS** optional

**DESCRIPTION**

"Instance 8 Program 1b loudness out of range."

**DEFVAL** { -1 }

::= { inst8-pgm1b 3 }

--

-- inst8-pgm1b traps

--

**inst8-pgm1b-audio-ok TRAP-TYPE**

**ENTERPRISE** inst8-pgm1b-silence

**DESCRIPTION**

"Aero.1000 Instance 8 Program 1b audio OK."

::= 0

**inst8-pgm1b-audio-loss TRAP-TYPE**

**ENTERPRISE** inst8-pgm1b-silence

**DESCRIPTION**

**"Aero.1000 Instance 8 Program 1b audio loss."**

**::= 1**

**inst8-pgm1b-outlm-ok TRAP-TYPE**

**ENTERPRISE inst8-pgm1b-outlm-alarm**

**DESCRIPTION**

**"Aero.1000 Instance 8 Program 1b loudness OK."**

**::= 0**

**inst8-pgm1b-outlm-alarm TRAP-TYPE**

**ENTERPRISE inst8-pgm1b-outlm-alarm**

**DESCRIPTION**

**"Aero.1000 Instance 8 Program 1b loudness out of range."**

**::= 1**

**--**

**-- inst8-pgm1c**

**--**

**inst8-pgm1c-silence OBJECT-TYPE**

**SYNTAX INTEGER {unavailable (-1), ok (0), silence (1)}**

**ACCESS read-only**

**STATUS optional**

**DESCRIPTION**

**"Instance 8 Program 1c silence."**

**DEFVAL { -1 }**

**::= { inst8-pgm1c 1 }**

**inst8-pgm1c-outlm OBJECT-TYPE**

**SYNTAX** INTEGER {(-144..0)}

**ACCESS** read-only

**STATUS** optional

**DESCRIPTION**

"Instance 8 Program 1c loudness dB LKFS / LUFS."

**DEFVAL** { -1 }

**::=** { inst8-pgm1c 2 }

**inst8-pgm1c-outlm-alarm OBJECT-TYPE**

**SYNTAX** INTEGER {unavailable (-1), ok (0), out-of-range (1)}

**ACCESS** read-only

**STATUS** optional

**DESCRIPTION**

"Instance 8 Program 1c loudness out of range."

**DEFVAL** { -1 }

**::=** { inst8-pgm1c 3 }

--

-- inst8-pgm1c traps

--

**inst8-pgm1c-audio-ok TRAP-TYPE**

**ENTERPRISE** inst8-pgm1c-silence

**DESCRIPTION**

"Aero.1000 Instance 8 Program 1c audio OK."

**::=** 0

**inst8-pgm1c-audio-loss TRAP-TYPE**

**ENTERPRISE inst8-pgm1c-silence**

**DESCRIPTION**

"Aero.1000 Instance 8 Program 1c audio loss."

::= 1

**inst8-pgm1c-outlm-ok TRAP-TYPE**

**ENTERPRISE inst8-pgm1c-outlm-alarm**

**DESCRIPTION**

"Aero.1000 Instance 8 Program 1c loudness OK."

::= 0

**inst8-pgm1c-outlm-alarm TRAP-TYPE**

**ENTERPRISE inst8-pgm1c-outlm-alarm**

**DESCRIPTION**

"Aero.1000 Instance 8 Program 1c loudness out of range."

::= 1

--

-- inst8-pgm2

--

**inst8-pgm2-silence OBJECT-TYPE**

**SYNTAX** INTEGER {unavailable (-1), ok (0), silence (1)}

**ACCESS** read-only

**STATUS** optional

**DESCRIPTION**

"Instance 8 Program 2 silence."

**DEFVAL** { -1 }

::= { inst8-pgm2 1 }

**inst8-pgm2-outlm OBJECT-TYPE**

**SYNTAX** INTEGER {{-144..0}}

**ACCESS** read-only

**STATUS** optional

**DESCRIPTION**

"Instance 8 Program 2 loudness dB LKFS / LUFS."

**DEFVAL** { -1 }

::= { inst8-pgm2 2 }

**inst8-pgm2-outlm-alarm** OBJECT-TYPE

**SYNTAX** INTEGER {unavailable (-1), ok (0), out-of-range (1)}

**ACCESS** read-only

**STATUS** optional

**DESCRIPTION**

"Instance 8 Program 2 loudness out of range."

**DEFVAL** { -1 }

::= { inst8-pgm2 3 }

--

-- inst8-pgm2 traps

--

**inst8-pgm2-audio-ok** TRAP-TYPE

**ENTERPRISE** inst8-pgm2-silence

**DESCRIPTION**

"Aero.1000 Instance 8 Program 2 audio OK."

::= 0

**inst8-pgm2-audio-loss** TRAP-TYPE

**ENTERPRISE** inst8-pgm2-silence

**DESCRIPTION**

"Aero.1000 Instance 8 Program 2 audio loss."

::= 1



**inst8-pgm2-outlm-ok TRAP-TYPE**

**ENTERPRISE inst8-pgm2-outlm-alarm**

**DESCRIPTION**

**"Aero.1000 Instance 8 Program 2 loudness OK."**

**::= 0**

**inst8-pgm2-outlm-alarm TRAP-TYPE**

**ENTERPRISE inst8-pgm2-outlm-alarm**

**DESCRIPTION**

**"Aero.1000 Instance 8 Program 2 loudness out of range."**

**::= 1**

**--**

**-- inst8-pgm2r**

**--**

**inst8-pgm2r-silence OBJECT-TYPE**

**SYNTAX INTEGER {unavailable (-1), ok (0), silence (1)}**

**ACCESS read-only**

**STATUS optional**

**DESCRIPTION**

**"Instance 8 Program 2r silence."**

**DEFVAL { -1 }**

**::= { inst8-pgm2r 1 }**

**inst8-pgm2r-outlm OBJECT-TYPE**

**SYNTAX INTEGER {(-144..0)}**

**ACCESS read-only**

**STATUS optional**

**DESCRIPTION**

**"Instance 8 Program 2r loudness dB LKFS / LUFS."**

DEFVAL { -1 }

::= { inst8-pgm2r 2 }

**inst8-pgm2r-outlm-alarm OBJECT-TYPE**

**SYNTAX** INTEGER {unavailable (-1), ok (0), out-of-range (1)}

**ACCESS** read-only

**STATUS** optional

**DESCRIPTION**

"Instance 8 Program 2r loudness out of range."

DEFVAL { -1 }

::= { inst8-pgm2r 3 }

--

-- inst8-pgm2r traps

--

**inst8-pgm2r-audio-ok TRAP-TYPE**

**ENTERPRISE** inst8-pgm2r-silence

**DESCRIPTION**

"Aero.1000 Instance 8 Program 2r audio OK."

::= 0

**inst8-pgm2r-audio-loss TRAP-TYPE**

**ENTERPRISE** inst8-pgm2r-silence

**DESCRIPTION**

"Aero.1000 Instance 8 Program 2r audio loss."

::= 1

**inst8-pgm2r-outlm-ok TRAP-TYPE**

**ENTERPRISE inst8-pgm2r-outlm-alarm**

**DESCRIPTION**

"Aero.1000 Instance 8 Program 2r loudness OK."

::= 0

**inst8-pgm2r-outlm-alarm TRAP-TYPE**

**ENTERPRISE inst8-pgm2r-outlm-alarm**

**DESCRIPTION**

"Aero.1000 Instance 8 Program 2r loudness out of range."

::= 1

--

-- inst8-pgm3

--

**inst8-pgm3-silence OBJECT-TYPE**

**SYNTAX** INTEGER {unavailable (-1), ok (0), silence (1)}

**ACCESS** read-only

**STATUS** optional

**DESCRIPTION**

"Instance 8 Program 3 silence."

**DEFVAL** { -1 }

::= { inst8-pgm3 1 }

**inst8-pgm3-outlm OBJECT-TYPE**

**SYNTAX** INTEGER {{-144..0}}

**ACCESS** read-only

**STATUS** optional

**DESCRIPTION**

"Instance 8 Program 3 loudness dB LKFS / LUFS."

**DEFVAL** { -1 }

**::= { inst8-pgm3 2 }**

**inst8-pgm3-outlm-alarm OBJECT-TYPE**

**SYNTAX INTEGER {unavailable (-1), ok (0), out-of-range (1)}**

**ACCESS read-only**

**STATUS optional**

**DESCRIPTION**

**"Instance 8 Program 3 loudness out of range."**

**DEFVAL { -1 }**

**::= { inst8-pgm3 3 }**

**--**

**-- inst8-pgm3 traps**

**--**

**inst8-pgm3-audio-ok TRAP-TYPE**

**ENTERPRISE inst8-pgm3-silence**

**DESCRIPTION**

**"Aero.1000 Instance 8 Program 3 audio OK."**

**::= 0**

**inst8-pgm3-audio-loss TRAP-TYPE**

**ENTERPRISE inst8-pgm3-silence**

**DESCRIPTION**

**"Aero.1000 Instance 8 Program 3 audio loss."**

**::= 1**

**inst8-pgm3-outlm-ok TRAP-TYPE**

**ENTERPRISE inst8-pgm3-outlm-alarm**

**DESCRIPTION**

"Aero.1000 Instance 8 Program 3 loudness OK."

::= 0

**inst8-pgm3-outlm-alarm TRAP-TYPE**

**ENTERPRISE inst8-pgm3-outlm-alarm**

**DESCRIPTION**

"Aero.1000 Instance 8 Program 3 loudness out of range."

::= 1

--

-- global traps

--

**heartbeat TRAP-TYPE**

**ENTERPRISE a1k**

**DESCRIPTION**

"Aero.1000 software heartbeat."

::= 73

**software-link-down TRAP-TYPE**

**ENTERPRISE snmp-internal-link-status**

**DESCRIPTION**

"Aero.1000 software link lost."

::= 1

**software-link-up TRAP-TYPE**

**ENTERPRISE snmp-internal-link-status**

**DESCRIPTION**

"Aero.1000 software link established."

::= 0

**software-link-failure TRAP-TYPE**

**ENTERPRISE snmp-internal-link-sustained-failure**

**DESCRIPTION**

"Aero.1000 software link sustained failure."

::= 1

**software-link-restored TRAP-TYPE**

**ENTERPRISE snmp-internal-link-sustained-failure**

**DESCRIPTION**

"Aero.1000 software link re-established."

::= 0

**cpu-temperature-hot TRAP-TYPE**

**ENTERPRISE cpu-hot**

**DESCRIPTION**

"CPU overheating."

::= 1

**cpu-temperature-ok TRAP-TYPE**

**ENTERPRISE cpu-hot**

**DESCRIPTION**

**"CPU temperature OK."**

**::= 0**

**chassis-temperature-hot TRAP-TYPE**

**ENTERPRISE chassis-hot**

**DESCRIPTION**

**"Chassis overheating."**

**::= 1**

**chassis-temperature-ok TRAP-TYPE**

**ENTERPRISE chassis-hot**

**DESCRIPTION**

**"Chassis temperature OK."**

**::= 0**

**cpu-fan-failure TRAP-TYPE**

**ENTERPRISE cpu-fan-status**

**DESCRIPTION**

**"CPU fan failure."**

**::= 1**

**cpu-fan-ok TRAP-TYPE**

**ENTERPRISE cpu-fan-status**

**DESCRIPTION**

**"CPU fan OK."**

**::= 0**

**-- chassis-fan-failure TRAP-TYPE**

**-- ENTERPRISE chassis-fan-status**

**-- DESCRIPTION**

**-- "Chassis fan failure."**

**-- ::= 1**

**-- chassis-fan-ok TRAP-TYPE**

**-- ENTERPRISE chassis-fan-status**

**-- DESCRIPTION**

**-- "Chassis fan OK."**

**-- ::= 0**

**power-redundancy-failure TRAP-TYPE**

**ENTERPRISE psu-status**

**DESCRIPTION**

**"Power Redundancy Failure."**

**::= 1**

**power-redundancy-ok TRAP-TYPE**

**ENTERPRISE psu-status**

**DESCRIPTION**

**"Power Redundancy OK."**

**::= 0**



**audio-input-zero TRAP-TYPE**

**ENTERPRISE audio-input-status**

**DESCRIPTION**

**"Audio Input all zeroes."**

**::= 1**

**audio-input-ok TRAP-TYPE**

**ENTERPRISE audio-input-status**

**DESCRIPTION**

**"Audio Input OK (non-zero)."**

**::= 0**

**video-input-missing TRAP-TYPE**

**ENTERPRISE video-input-status**

**DESCRIPTION**

**"Video Input missing."**

**::= 1**

**video-input-ok TRAP-TYPE**

**ENTERPRISE video-input-status**

**DESCRIPTION**

**"Video Input OK."**

**::= 0**

**audio-reference-missing TRAP-TYPE**

**ENTERPRISE audio-reference-status**

**DESCRIPTION**

"Audio Reference missing."

::= 1

**audio-reference-ok TRAP-TYPE**

**ENTERPRISE audio-reference-status**

**DESCRIPTION**

"Audio Reference OK."

::= 0

**cn2000-failure TRAP-TYPE**

**ENTERPRISE cn2000-status**

**DESCRIPTION**

"CN2000 failure."

::= 1

**cn2000-ok TRAP-TYPE**

**ENTERPRISE cn2000-status**

**DESCRIPTION**

"CN2000 OK."

::= 0

**END**