



# HDS1020 Conductor

IPTV and Digital Signage Controller



## Complete Signage and IPTV System Management Solution

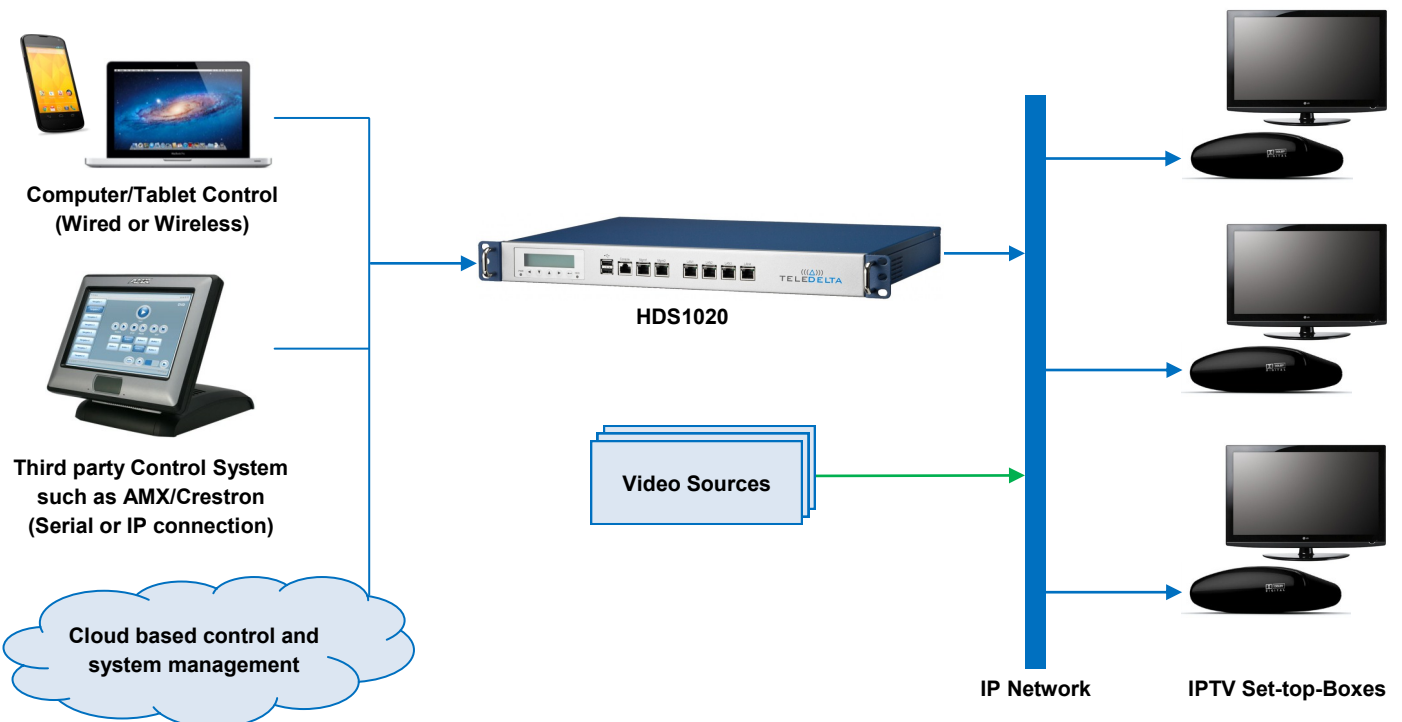
The TeleDelta HDS1020 Conductor is a powerful, yet low power consumption, rack-mount IPTV Controller, Control Interface and Digital Signage Controller for 24/7 operation and management of IPTV, Signage, Kiosk and Touch Panels.

Its modular design enables integrators and operators to select from various control modules to customise their installation, operation and on-going service.

The HDS1020 acts as an active web server hosting remote control user interfaces that can be customised for each site with graphical display layouts providing touch or click-thru access to individual or grouped display's for control of Signage, source/channel selection, volume and TV display power on/off etc. This functionality can be accessed from Tablets, Laptops, PC's or other web enabled devices for efficient, effective and user friendly control of a venues display systems.

Designed for the centralised control of various types of displays the control protocol translator function acts as the interface from popular control systems such as Crestron, AMX and others, to the commonly deployed STB's in the hospitality, corporate, education and entertainment sectors.

## System Concept



For more information please visit [www.teledelta.com](http://www.teledelta.com) or contact your local distributor.

# HDS1020 Conductor

## IPTV and Digital Signage Controller

### Features

- Full Signage management and network wide scheduling
- Provides “logon” functions for STB initialisation
- Over the wire TCP/IP management of STB’s, network wide
- Drivers available for Amino, AndroidTV, Exceed, AcidTV & Python IP devices
- Public/Private Key encryption security for secure networks
- Enable remote network management of Hospitality TV’s
- Lowers energy costs by allowing intelligent power management



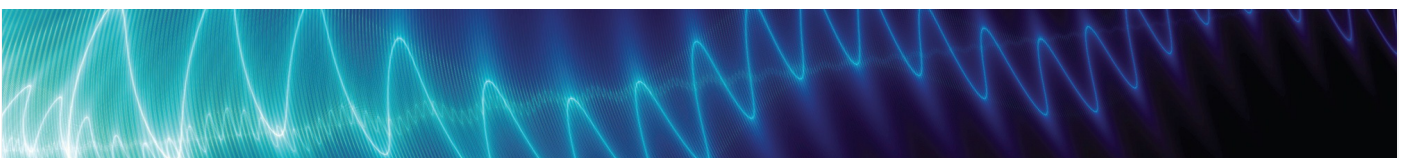
### System Options

- iOS, PC or Android centralised remote control
- Content Distribution
- DRM and content protection
- Digital Signage
- Remote Supervision and control
- ASCII RS-232 control protocol conversion for Crestron, AMX and similar control systems

### System Architecture

In the base form the HDS1020 adopts the latest Intel® Atom™ processor and Intel® 82801HBM I/O Controller Hub. The platform reserves space for one 3.5" SATA HDD and one Compact-Flash slot for storage or upgrading the OS and other applications such as Signage or VOD. By leveraging PCI Express (PCI-e) technology, the HDS-1020 takes full advantage of the ICH8M PCI-e capability to maximize I/O throughput. For easy access, the front panel also has an RJ-45 console port and LCD Module for local system management, maintenance, and diagnostics. It is FCC, CE, UL, CCC and RoHS compliant.

Large scale, high volume VOD systems are implemented on enterprise grade redundant servers. Please consult you dealer for specific information.





# HDS1020 Conductor

## IPTV and Digital Signage Controller

The key component to the HDS1020 operation is the host software - Conductor

Conductor is a stable software platform designed for the IPTV, Signage, Media Server and scheduling operations.



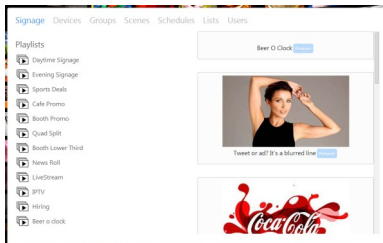
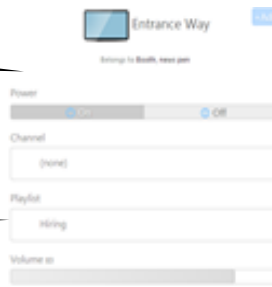
Individual login supports different entitlements to operation for secure login in

### Secure and Stable

Conductor runs natively on the HDS1020 platform and does not require updates or any other connectivity with third party servers making the system secure and suitable for 24/7 unattended operation.

Controls STB's power  
volume channel selection

Controls STB's signage



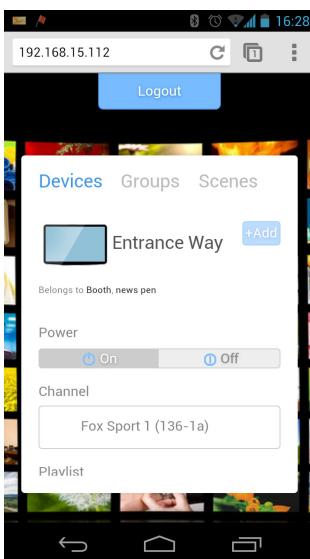
Serves STB's signage

Devices Groups Scenes Channels

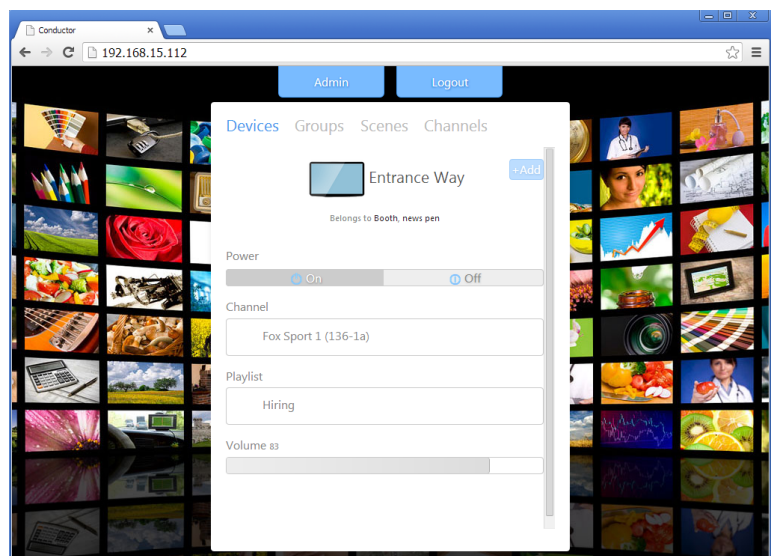
Freeview NZ SKY TV MATV



Provides VOD and manifest files for Web control



Mobile



PC web browser

Allows selected user functionality on wired, wireless and touch devices by intelligent web pages

# HDS1020 Conductor

## IPTV and Digital Signage Controller

Signage Devices Groups Scenes Schedt

Manages and serves Media assets for signage

channel fade playlist power

channel [Add](#)

audio [Add](#)

- Radio 1 [igmp://224.2.2.3:1234;audiopid=258;pcrpid=259;](#)
- Radio Live [igmp://radiolive.com](#)

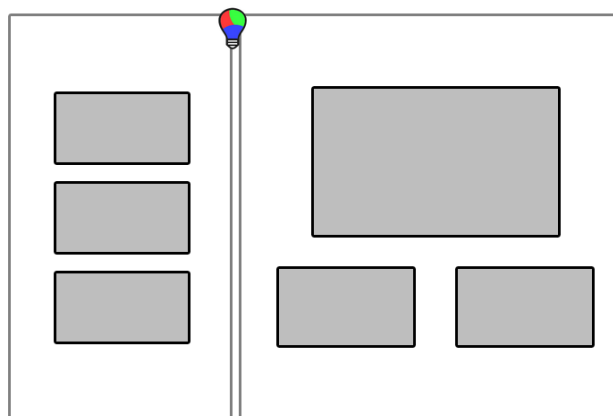
Manages media channels lists

iptv [Add](#)

- Fox Sport 1 (136-1a) [igmp://224.2.2.3:1234;audiopid=258;pcrpid=259;](#)
- ESPN (136-2a) [igmp://224.2.2.4:1234;audiopid=514;pcrpid=515;videopi](#)
- Fox Sport 2 (136-1b) [igmp://224.2.2.3:1234;audiopid=262;pcrpid=263;](#)

fade [Add](#)

Devices **Groups** Scenes Channels



Displays device locations by graphical interfaces, (plans, site pictures, graphics)

Signage Devices Groups Scenes Schedules

Playlists

- Daytime Signage
- Evening Signage
- Sports Deals
- Cafe Promo
- Booth Promo
- Quad Split
- Booth Lower Third
- News Roll
- LiveStream
- IPTV
- Hiring
- Beer o'clock

Ingests Cloud or Master unit media

Signage Devices **Groups**

- Booth
- Booth Elevation
- Booth Photo
- HD Streaming Corner
- IPTV Corner
- Lounge
- news pen

[Add](#)

Allows grouping of displays by function or area

Devices **Groups** Scenes Channels

TV Lighting

TV

- Entrance Way On, Fox Sport 1 (136-1a), Hiring, Volume 83 (offline)
- Full Screen On, Volume 0 (offline)
- Left Hand On, 136-2, Sports Deals, Volume 66 (offline)
- Quad Split On, Volume 0 (offline)
- uStream On, Fox Sport 1 (136-1a), News Roll, Volume 0 (offline)

Lighting

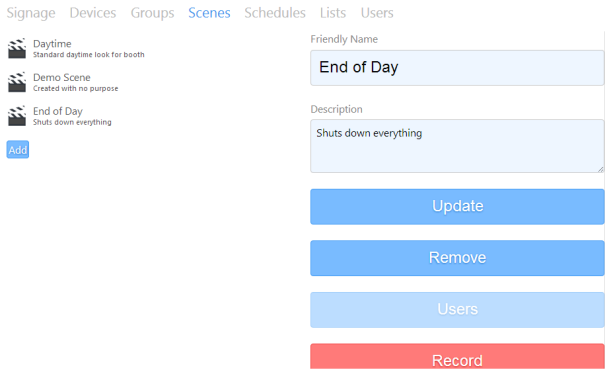
- Booth Lighting Intensity 0, Red 9, Green 0, Blue 255, 5s

Displays device locations by logical

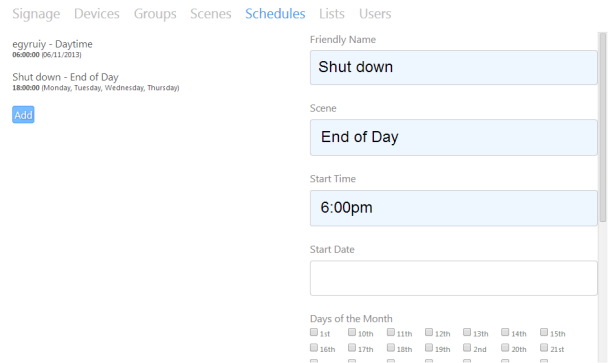


# HDS1020 Conductor

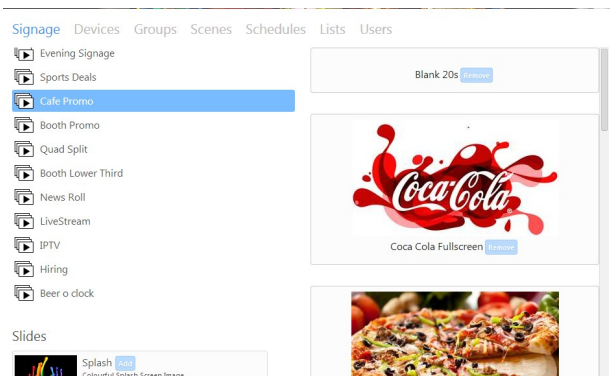
## IPTV and Digital Signage Controller



Scene macro allows recording of complex setups



Manages Scene events by Schedule



Create and manage playlists



Monitors devices